



॥ जल पात्रम् तु ताम्रस्य यस्य सेवेत् सुखो भवेत् ॥

Product Catalogue 2020

TABLEWARE | BAR WARE | BUFFET WARE | HOUSE WARE | CORPORATE GIFT SETS

Pure Hospitality Range for the Connoisseur...



COPPER

The Health-Line of Life

The ageless use of copper bears testimony to its myriad virtues and everlasting appeal. Its therapeutic value has been handed down to us through the ages. In fact, water stored in copperware is virtually the elixir of life. Purified, it helps to regulate digestion and cardiac orders, the basis of good health, as practiced by Rishis from old Vedic times. It has been known for thousands of years that copper metal can inhibit the growth of bacteria, viruses and fungi. Our Scriptures also recommend drinking of four glasses of water stored overnight in a copper utensil every morning.

"The disease-causing bacteria cannot survive for more than a few hour on copper surfaces."

-Institute of Micro Biology & Research U. K.



Copper Ware Beyond Compare



INDEX

TABLEWARE		4 - 39
KANSA/ BRONZE		6 - 11
WATER PITCHER	7	
PORTION BOWL	7	
THALI SET	10	
TABLE ESSENTIALS	10	
CUTLERY	11	
PITAL/ BRASS		12 - 17
WATER PITCHER	13	
PORTION BOWL	13	
SERVING ACCESSORIES	15	
THALI SET	16	
TABLE ESSENTIALS	16	
CUTLERY	17	
TAMBA/ COPPER		18 - 43
WATER PITCHER	19	
PORTION BOWL	20	
SERVING ACCESSORIES	25	
THALI SET	32	
TABLE ESSENTIALS	34	
TABLE ACCESSORIES	37	
CUTLERY	40	
BARWARE		44 - 45
BUFFETWARE		46 - 49
DISPLAY ACCESSORIES	46	
CHAFING DISH	48	
HOMEWARE		50 - 61
FAMILY STORAGE	51	
EXCLUSIVE SERIES	52	
BEDSIDE STORAGE	52	
TRAVEL PACK	56	
TUMBLER	60	
CORPORATE GIFT SETS		62 - 63



KNOW YOUR METAL

Your body will thank us later

BRONZE/ KANSA

Kansa is the healthiest metal to eat in

WHAT IS KANSA?

Kansa the Indian name for Bell metal is a hard alloy usually a form bronze, with approximately 4:1 ratio of copper to tin. It has also been said 'Shudhh Dhatu' in Vedas therefore it is used in worship. After Gold, Silver, Kansa is the 3rd costliest metal used for crafting utensils.

BENEFITS OF KANSA?

This ancient metal offers immense benefits. Specifically, it pacifies vata (dry skin, nervous temperament, irritability) and pitta. It also helps reduce obesity, improve eyesight and skin condition. Bronze is good source of copper and tin. Ayurveda further taught us that eating and drinking from alkalising metals like Kansa vessels has wellness benefits for our health and well being. Kansa kitchenware is also called the hands of grace.

कांस्यम् बुद्धिवर्धकम् "meaning – eating in Bronze utensils enhances Intellect. Eating food in bronze pots, sharpens the memory and blood gets cleaned which increases the appetite.

BRASS/ PITAL

Pital is the preserver of taste in food

WHAT IS PITAL?

An alloy of copper and zinc – Brass, a metal that has a shine like Gold, stores ancient health secrets in itself. The composition of brass makes it the perfect metal to cook your food in, as you add flavours to your dishes, brass adds nutrition to it.

BENEFITS OF PITAL?

Ayurveda Brass helps in providing healthier hair and produces required amounts of melanin in skin. Melanin is extremely important to ensure the health of your skin and protect it from harmful UV rays. In addition, it also helps pacify pitta (burning sensations, aggression), increases haemoglobin count, and improves the general condition of your skin.

Find your way back to nature and enrich your bodies with nutrients from Brass.



COPPER/ TAMBA

Tamba is the healthiest metal to drink water in

WHAT IS TAMBA?

Copper, one of the oldest metals used by man, a pure element found under the veil of nature occurring as a natural mineral. The earth contains the metal copper, a vedic cure being used since years to improve health.

BENEFITS OF TAMBA?

Water stored overnight in copper, and consumed in the morning is the best start to your day. Copper not only kills harmful bacteria in water but adds nutrients necessary for your body and helps in proper absorption of it. It improves your skin and premature aging of the human body, with the pollution in the air, maintain the glow of your skin by drinking water from copper. In today's fast moving world, we need the health secret of our forefathers, simply replacing your vessels from steel to copper helps reducing cholesterol, control thyroid and boosts your immunity. Bring a small change by buying pure copper utensils and bring back the traditional health care methods in modern designs to improve your well being.

॥ जल पात्रम् तु ताम्रस्य यस्य सेवेत् सुखो भवेत् ॥

Over time these metals will naturally change color, due to a process known as oxidization. When exposed to the natural elements such as wind and rain, these metals develops this "patina" which actually protects and preserves the metal underneath, which could be removed using the following care & use instructions.

CARE & USE

WHAT WILL YOU NEED?

- Water
- Clean Towel
- Soft cotton polishing cloths
- Lemon Juice
- Baking Soda

CLEAN THAT HEALTH METAL:

1. Rinse your items in water, and dry thoroughly.
2. Place about 2 tablespoons of baking soda in a small dish and drizzle a small amount of lemon juice onto the baking soda and mix until a soft paste forms.
3. Apply the paste to your item using your hands or with a small polishing cloth.
4. With a polishing cloth, rub the paste onto the item using small circular motions.
5. Allow the paste to stay on the item for 20 to 30 minutes.
6. Rinse the item thoroughly with warm water to remove the paste and buff dry with a clean towel.

Ancient history speak highly in favour of these metals for balanced and healthy lifestyle, its high time we make it a trend



WATER PITCHER



Item Code : K-131-P1
 Capacity : 1600ml
 Weight : 1200gm
 Dimension (cm) : 9.0x9.0x22.5

DOLPHIN PITCHER WITH LID

PORTION BOWL



Item Code	Size	Capacity	Weight	Dimension (cm)
K-104-P1	No. 1	400ml	500gm	12.0x12.0x6.0
K-104-P2	No. 2	600ml	630gm	15.0x15.0x6.5
K-104-P3	No. 3	900ml	920gm	17.0x17.0x6.0

SERVING HANDI

Item Code	Size	Weight	Dimension (cm)
K-105-P1	No. 1	170gm	12.0x12.0x5.5
K-105-P2	No. 2	240gm	14.0x14.0x6.0
K-105-P3	No. 3	380gm	16.5x16.5x7.5



SERVING HANDI LID



SERVING KARAH

Item Code	Size	Capacity	Weight	Dimension (cm)
K-103-P1	No. 1	400ml	350gm	13.0x13.0x4.5
K-103-P2	No. 2	500ml	450gm	14.0x14.0x4.5
K-103-P3	No. 3	600ml	550gm	16.0x16.0x5.0

PORTION BOWL



SERVING KARAH LID

Item Code	Size	Weight	Dimension (cm)
K-102-P1	No. 1	240gm	13.5x13.5x6.5
K-102-P2	No. 2	290gm	15.0x15.0x7.0
K-102-P3	No. 3	380gm	16.0x16.0x7.0

Item Code	Size	Weight	Dimension (cm)
K-101-P1	No. 1	490gm	17.5x17.5x1.0
K-101-P2	No. 2	600gm	20.5x20.5x1.0



SERVING TAWA



GRAVY BUCKET

Item Code	Size	Capacity	Weight	Dimension (cm)
K-108-P1	No. 1	400ml	500gm	10.0x10.0x10.0
K-108-P2	No. 2	500ml	550gm	11.0x11.0x10.5

Item Code	Size	Weight	Dimension (cm)
K-107-P1	No. 1	150gm	10.0x10.0x5.5
K-107-P2	No. 2	170gm	11.5x11.5x6.0



GRAVY BUCKET LID

PORTION BOWL



SQUARE PAN

Item Code	Size	Capacity	Weight	Dimension (cm)
K-109-P1	No. 1	300ml	550gm	11.5x11.5x3.5
K-109-P2	No. 2	400ml	650gm	13.5x13.5x3.5
K-109-P3	No. 3	550ml	780gm	16.0x16.0x3.8

Item Code	Size.	Capacity	Weight	Dimension (cm)
K-110-P1	No. 1	300ml	550gm	16.5x11.0x2.5
K-110-P2	No. 2	400ml	730gm	19.0x13.5x3.0
K-110-P3	No. 3	700ml	880gm	21.0x15.0x3.8



OVAL PAN



SAUCE PAN

Item Code	Size	Capacity	Weight	Dimension (cm)
K-111-P1	No. 1	400ml	400gm	11.0x11.0x5.0
K-111-P2	No. 2	500ml	500gm	12.5x12.5x5.0
K-111-P3	No. 3	700ml	630gm	14.0x14.0x5.5

KANSA IS THE HEALTHIEST METAL TO EAT IN!

Pure Kansa is an Indian name for bell metal or bronze. An ultra-superior metal, Kansa is an alloy of Copper 80 percent and Tin 20 percent both heated together up to 700 centigrade to form pure bronze. A malleable metal in itself, the prepared alloy is further moulded into handcrafted products and can acquire different kinds of finishes.

THALI SET



SAGAN THALI SET - SMALL (8 PCS SET)



SAGAN THALI SET - BIG (10 PCS SET)

P-114-P1

Item Name	Capacity	Weight	Dimension (cm)
SAGAN THALI - SMALL X 1	---	1400gm	31.5x31.5x3.0
SAGAN KATORI - SMALL X 4	150ml	150gm	7.0x7.0x3.5
SAGAN GLASS X 1	400ml	260gm	5.5x5.5x11.0
SAGAN CHUTNEY KATORI X 1	100ml	100gm	6.0x6.0x3.0
DESSERT SPOON X 1	---	---	18.0x4.0x2.0

P-114-P2

Item Name	Capacity	Weight	Dimension (cm)
SAGAN THALI - BIG X 1	---	1900gm	37.0x37.0x3.5
SAGAN KATORI - BIG X 5	150ml	170gm	8.0x8.0x4.0
SAGAN GLASS X 1	400ml	260gm	5.5x5.5x11.0
SAGAN CHUTNEY KATORI X 1	100ml	100gm	6.0x6.0x3.0
SAGAN HALWA PLATE X 1	200ml	150gm	11.5x11.5x2.0
DESSERT SPOON X 1	---	---	18.0x4.0x2.0

TABLE ESSENTIALS



FULL PLATE



QUARTER PLATE

Item Code : K-115-P1
Weight : 500gm
Dimension (cm) : 20.0x20.0x1.3

Item Code : K-116-P1
Weight : 1000gm
Dimension (cm) : 29.0x29.0x1.5



SAGAN HALWA PLATE

Item Code : K-118-P1
Capacity : 180ml
Weight : 150gm
Dimension (cm) : 11.5x11.5x2.0



SAGAN GLASS

Item Code : K-117-P1
Capacity : 400ml
Weight : 280gm
Dimension (cm) : 5.5x5.5x11.0



SAGAN KATORI



SAGAN KATORI



SAGAN CHUTNEY KATORI

Item Name	Item Code	Size	Capacity	Weight	Dimension (cm)
SAGAN CHUTNEY KATORI	K-119A-P1	---	100ml	100gm	6.0x6.0x3.0
SAGAN KATORI	K-119-P1	No. 1	150ml	150gm	7.0x7.0x3.5
SAGAN KATORI	K-119-P2	No. 2	200ml	170gm	8.0x8.0x4.0

TABLE ESSENTIALS



Item Code : K-121-P1
 Weight : 240gm
 Dimension (cm) : 11.5x11.5x5.0

FINGER BOWL



UNDER LINER

Item Code : K-122-P1
 Weight : 200gm
 Dimension (cm) : 14.0x14.0x1.3



ICE CREAM

Item Code : K-120-P1
 Weight : 250gm
 Dimension (cm) : 9.7x9.7x9.0

CUTLERY



Item Name	Item Code	Weight	Dimension (cm)
ICE CREAM SPOON	K-123-P1	40gm	14.0x3.0x1.0
TEA SPOON	K-124-P1	50gm	16.0x3.5x1.5
DESSERT SPOON	K-125-P1	60gm	15.0x3.5x2.0
DESSERT FORK	K-126-P1	50gm	18.5x2.8x2.0
DESSERT KNIFE	K-127-P1	60gm	19.5x2.5x2.0
SOUP SPOON	K-128-P1	60gm	17.0x4.5x2.0
SERVING SPOON	K-129-P1	100gm	20.5x5.3x2.5
SERVING XL SPOON	K-130-P1	160gm	25.0x7.0x2.5



love

WATER PITCHER



Item Code : P-131-P1
 Capacity : 1600ml
 Weight : 1100gm
 Dimension (cm) : 9.0x9.0x22.5

DOLPHIN PITCHER WITH LID

PORTION BOWL



SERVING HANDI

Item Code	Size	Capacity	Weight	Dimension (cm)
P-104-P1	No. 1	400ml	470gm	12.0x12.0x6.0
P-104-P2	No. 2	600ml	570gm	15.0x15.0x6.5
P-104-P3	No. 3	900ml	870gm	17.0x17.0x6.0

Item Code	Size	Weight	Dimension (cm)
P-105-P1	No. 1	160gm	12.0x12.0x5.5
P-105-P2	No. 2	230gm	14.0x14.0x6.0
P-105-P3	No. 3	380gm	16.5x16.5x7.5



SERVING HANDI LID



SERVING KARAH

Item Code	Size	Capacity	Weight	Dimension (cm)
P-103-P1	No. 1	400ml	320gm	13.0x13.0x4.5
P-103-P2	No. 2	500ml	420gm	14.0x14.0x4.5
P-103-P3	No. 3	600ml	520gm	16.0x16.0x5.0

PORTION BOWL



SERVING KARAH LID

Item Code	Size	Capacity	Weight	Dimension (cm)
P-102-P1	No. 1	230gm	240gm	13.5x13.5x6.5
P-102-P2	No. 2	280gm	310gm	15.0x15.0x7.0
P-102-P3	No. 3	380gm	360gm	16.0x16.0x7.0

Item Code	Size	Weight	Dimension (cm)
P-101-P1	No. 1	440gm	17.5x17.5x1.0
P-101-P2	No. 2	550gm	20.5x20.5x1.0



SERVING TAWA



GRAVY BUCKET

Item Code	Size	Capacity	Weight	Dimension (cm)
P-108-P1	No. 1	400ml	470gm	10.0x10.0x10.0
P-108-P2	No. 2	500ml	520gm	11.0x11.0x10.5

Item Code	Size	Weight	Dimension (cm)
P-107-P1	No. 1	140gm	10.0x10.0x5.5
P-107-P2	No. 2	160gm	11.5x11.5x6.0



GRAVY BUCKET LID

PORTION BOWL



SQUARE PAN

Item Code	Size	Capacity	Weight	Dimension (cm)
P-109-P1	No. 1	300ml	520gm	11.5x11.5x3.5
P-109-P2	No. 2	400ml	620gm	13.5x13.5x3.5
P-109-P3	No. 3	550ml	720gm	16.0x16.0x3.8

Item Code	Size	Capacity	Weight	Dimension (cm)
P-110-P1	No. 1	300ml	520gm	16.5x11.0x2.5
P-110-P2	No. 2	400ml	670gm	19.0x13.5x3.0
P-110-P3	No. 3	700ml	800gm	21.0x15.0x3.8



OVAL PAN



SAUCE PAN

Item Code	Size	Capacity	Weight	Dimension (cm)
P-111-P1	No. 1	400ml	350gm	11.0x11.0x5.0
P-111-P2	No. 2	500ml	450gm	12.5x12.5x5.0
P-111-P3	No. 3	700ml	570gm	14.0x14.0x5.5

SERVING ACCESSORIES



TABLE TANDOOR

Item Code	: P-112-P1
Weight	: 1200gm
Dimension (cm)	: 11.5x4.0x30.0



SNACK WARMER
CONCEPT

Item Code	Weight	Dimension (cm)
P-113-P1		
ROUND PLATTER FLAT X 1	1400gm	25.5x25.5x17.0
TOOTH PICK HOLDER X 1	130gm	4.0x4.0x7.0
NAPKIN HOLDER X 1	90gm	7.5x7.5x7.5
SOVEREIGN KATORI X 2	240gm	7.0x7.0x4.0
WOODEN BASE X 1	970gm	33.0x33.0x3.0

THALI SET



SAGAN THALI SET - SMALL (8 PCS SET)

P-114-P1

Item Name	Capacity	Weight	Dimension (cm)
SAGAN THALI - SMALL X 1	---	1400gm	31.5x31.5x3.0
SAGAN KATORI - SMALL X 4	150ml	140gm	7.0x7.0x3.5
SAGAN GLASS X 1	400ml	240gm	5.5x5.5x11.0
SAGAN CHUTNEY KATORI X 1	100ml	100gm	6.0x6.0x3.0
DESSERT SPOON X 1	---	---	18.0x4.0x2.0



SAGAN THALI SET - BIG (10 PCS SET)

P-114-P2

Item Name	Capacity	Weight	Dimension (cm)
SAGAN THALI - BIG X 1	---	1900gm	37.0x37.0x3.5
SAGAN KATORI - BIG X 5	150ml	160gm	8.0x8.0x4.0
SAGAN GLASS X 1	400ml	240gm	5.5x5.5x11.0
SAGAN CHUTNEY KATORI X 1	100ml	100gm	6.0x6.0x3.0
SAGAN HALWA PLATE X 1	200ml	170gm	11.5x11.5x2.0
DESSERT SPOON X 1	---	---	18.0x4.0x2.0

TABLE ESSENTIALS



FULL PLATE

Item Code : P-116-P1
Weight : 1000gm
Dimension (cm) : 29.0x29.0x1.5



QUARTER PLATE

Item Code : P-115-P1
Weight : 500gm
Dimension (cm) : 20.0x20.0x1.3



SAGAN HALWA PLATE
Item Code : P-118-P1
Capacity : 20ml
Weight : 240gm
Dimension (cm) : 11.5x11.5x2.0



SAGAN GLASS
Item Code : P-117-P1
Capacity : 400ml
Weight : 250gm
Dimension (cm) : 5.5x5.5x11.0



SAGAN KATORI



SAGAN KATORI



SAGAN CHUTNEY KATORI

Item Name	Item Code	Size	Capacity	Weight	Dimension (cm)
SAGAN CHUTNEY KATORI	P-119A-P1	---	100ml	100gm	6.0x6.0x3.0
SAGAN KATORI	P-119-P1	No. 1	150ml	140gm	7.0x7.0x3.5
SAGAN KATORI	P-119-P2	No. 2	200ml	160gm	8.0x8.0x4.0

TABLE ESSENTIALS



Item Code : P-121-P1
 Weight : 220gm
 Dimension (cm) : 11.5x11.5x5.0

FINGER BOWL



UNDER LINER

Item Code : P-122-P1
 Weight : 200gm
 Dimension (cm) : 14.0x14.0x1.3



ICE CREAM CUP

Item Code : P-120-P1
 Weight : 220gm
 Dimension (cm) : 9.7x9.7x9.0

CUTLERY



Item Name	Item Code	Weight	Dimension (cm)
ICE CREAM SPOON	P-123-P1	40gm	14.0x3.0x1.0
TEA SPOON	P-124-P1	40gm	16.0x3.5x1.5
DESSERT SPOON	P-125-P1	60gm	15.0x3.5x2.0
DESSERT FORK	P-126-P1	50gm	18.5x2.8x2.0
DESSERT KNIFE	P-127-P1	60gm	19.5x2.5x2.0
SOUP SPOON	P-128-P1	60gm	17.0x4.5x2.0
SERVING SPOON	P-129-P1	90gm	20.5x5.3x2.5
SERVING XL SPOON	P-130-P1	160gm	25.0x7.0x2.5



WATER PITCHER



MUGLAI JUG - SMALL
Copper, Brass

Item Code : T-119-H1
No. : No. 1
Capacity : 1100ml
Weight : 600gm
Dimension (cm) : 10.0x10.0x20.0



MUGLAI JUG - MEDIUM
Copper, Brass

Item Code : T-119-H2
No. : No. 2
Capacity : 1500ml
Weight : 850gm
Dimension (cm) : 12.0x10.0x22.0



MUGLAI JUG - LARGE
Copper, Brass

Item Code : T-119-H3
No. : No. 3
Capacity : 1700ml
Weight : 1000gm
Dimension (cm) : 12.0x9.0x24.0



MONARCH JUG
Copper

Item Code : T-197-H1
Capacity : 1600ml
Weight : 600gm
Dimension (cm) : 8.0x7.0x19.0



PEARL JUG - DELUX
Copper

Item Code : T-196-H1
Capacity : 1400ml
Weight : 700gm
Dimension (cm) : 10.0x10.0x27.0



PEARL JUG - HAMMER
Copper

Item Code : T-195-H1
Capacity : 1400ml
Weight : 700gm
Dimension (cm) : 10.0x10.0x27.0

PORTION BOWL



HYDERABADI HANDI
Copper, Stainless Steel

Item Code	Size	Capacity	Weight	Dimension (cm)
T-104-HZ	No. 00	100ml	190gm	9.5x9.5x4.5
T-104-H0	No. 0	250ml	250gm	11.0x11.0x5.0
T-104-H1	No. 1	300ml	320gm	13.0x13.0x5.5
T-104-H2	No. 2	600ml	420gm	15.5x15.5x6.5
T-104-H3	No. 3	800ml	600gm	17.0x17.0x7.5
T-104-H4	No. 4	1300ml	800gm	20.0x20.0x8.0
T-104-H5	No. 5	1900ml	1100gm	23.5x23.5x8.5
T-104-H6	No. 6	3000ml	1500gm	27.0x27.0x9.3
T-104-H7	No. 7	3500ml	1600gm	29.0x29.0x10.0

Item Code	Size	Capacity	Weight	Dimension (cm)
T-164-H1	No. 1	300ml	320gm	13.0x13.0x5.8
T-164-H2	No. 2	600ml	420gm	15.3x15.3x6.8
T-164-H3	No. 3	800ml	600gm	17.0x17.0x7.5



BIRYANI HANDI
Copper, Stainless Steel

Item Code	Size	Capacity	Weight	Dimension (cm)
T-140-H1	No. 1	300ml	390gm	13.0x13.0x5.5
T-140-H2	No. 2	600ml	480gm	15.3x15.3x6.5
T-140-H3	No. 3	800ml	630gm	17.0x17.0x7.5
T-140-H4	No. 4	1300ml	900gm	20.5x20.5x8.0
T-140-H5	No. 5	1900ml	1200gm	23.5x23.5x9.0



SERVING HANDI WELDED HANDLE
Copper, Stainless Steel, Brass

Item Code	Size	Capacity	Weight	Dimension (cm)
T-102-H1	No. 1	450ml	400gm	10.5x10.5x7.5
T-102-H2	No. 2	650ml	500gm	12.0x12.0x8.0
T-102-H3	No. 3	900ml	650gm	13.0x13.0x9.0
T-102-H4	No. 4	1600ml	1000gm	16.0x16.0x12.0
T-102-H5	No. 5	2800ml	1650gm	18.5x18.5x14.0
T-102-H6	No. 6	4000ml	2100gm	21.5x21.5x15.0



PUNJABI HANDI
Copper, Stainless Steel



INDUCTION HANDI
Copper, Stainless Steel

Item Code	Size	Capacity	Weight	Dimension (cm)
T-171-H1	No. 1	300ml	270gm	13.0x13.0x5.0
T-171-H2	No. 2	600ml	340gm	15.0x15.0x6.0
T-171-H3	No. 3	800ml	460gm	17.0x17.0x7.0
T-171-H4	No. 4	1300ml	600gm	20.0x20.0x7.5
T-171-H5	No. 5	1900ml	780gm	24.0x24.0x7.0
T-171-H6	No. 6	3000ml	940gm	27.0x27.0x9.0
T-171-H7	No. 7	3500ml	950gm	28.5x28.5x9.0

PORTION BOWL



SERVING KARAH
Copper, Stainless Steel, Brass

Item Code	Size	Capacity	Weight	Dimension (cm)
T-103-H0	No. 0	200ml	270gm	11.0x11.0x6.0
T-103-H1	No. 1	300ml	300gm	13.0x13.0x6.5
T-103-H2	No. 2	450ml	360gm	15.0x15.0x7.5
T-103-H3	No. 3	600ml	450gm	16.5x16.5x8.8
T-103-H4	No. 4	800ml	550gm	17.5x17.5x9.8
T-103-H5	No. 5	1400ml	730gm	21.0x21.0x10.5

Item Code	Size	Capacity	Weight	Dimension (cm)
T-162-H1	No. 1	300ml	300gm	13.0x13.0x6.5
T-162-H2	No. 2	450ml	360gm	15.0x15.0x7.0
T-162-H3	No. 3	600ml	450gm	16.5x16.5x8.8
T-162-H4	No. 4	800ml	550gm	17.5x17.5x9.8
T-162-H5	No. 5	1400ml	730gm	21.0x21.0x10.5



BIRYANI KARAH
Copper, Stainless Steel, Brass

Item Code	Size	Capacity	Weight	Dimension (cm)
T-141-H1	No. 1	300ml	300gm	13.0x13.0x6.5
T-141-H2	No. 2	450ml	380gm	15.0x15.0x7.5
T-141-H3	No. 3	600ml	440gm	16.5x16.5x8.8
T-141-H4	No. 4	800ml	550gm	17.5x17.5x9.8
T-141-H5	No. 5	1400ml	700gm	21.0x21.0x10.5



SERVING KARAH WELDED HANDLE
Copper, Stainless Steel, Brass

Item Code	Size	Capacity	Weight	Dimension (cm)
T-603-H1	No. 1	450ml	480gm	10.5x10.5x7.5
T-603-H2	No. 2	650ml	550gm	12.0x12.0x8.0
T-603-H3	No. 3	900ml	740gm	13.0x13.0x10.0
T-603-H4	No. 4	1600ml	1380gm	16.0x16.0x12.0
T-603-H5	No. 5	2800ml	1980gm	18.5x18.5x14.0
T-603-H6	No. 6	4000ml	2320gm	21.5x21.5x15.5



PUNJABI HANDI WELDED HANDLE
Copper, Stainless Steel, Brass

Item Code	Size	Weight	Dimension (cm)
T-101-H1	No. 1	400gm	17.5x17.5x1.3
T-101-H2	No. 2	500gm	20.5x20.5x1.3
T-101-H3	No. 3	650gm	24.0x24.0x1.5
T-101-H4	No. 4	1000gm	30.0x30.0x1.8



SERVING TAWA
Copper, Stainless Steel, Brass

PORTION BOWL



GRAVY BUCKET
Copper, Stainless Steel

GRAVY BUCKET LIGHT WEIGHT

Item Code	Size	Capacity	Weight	Dimension (cm)
T-108A-H1	No. 1	350ml	370gm	10.0x10.0x10.0
T-108A-H2	No. 2	450ml	450gm	11.0x11.0x11.5
T-108A-H3	No. 3	800ml	660gm	15.5x15.5x12.5

GRAVY BUCKET HEAVY WEIGHT

Item Code	Size	Capacity	Weight	Dimension (cm)
T-108B-H1	No. 1	300ml	460gm	10.0x10.0x11.0
T-108B-H2	No. 2	400ml	550gm	11.0x11.0x13.5
T-108B-H3	No. 3	700ml	760gm	13.0x13.0x15.5

Item Code	Size	Capacity	Weight	Dimension (cm)
T-107-H1	No. 1	300ml	280gm	19.0x13.0x3.0
T-107-H2	No. 2	500ml	350gm	22.0x15.0x4.0
T-107-H3	No. 3	700ml	450gm	24.0x16.0x4.3



OVAL ENTRÉE DISH
Copper, Stainless Steel



OVAL ENTRÉE DISH WELDED HANDLE
Copper, Stainless Steel, Brass

Item Code	Size	Capacity	Weight	Dimension (cm)
T-198-H1	No. 1	300ml	350gm	19.0x13.0x3.5
T-198-H2	No. 2	500ml	400gm	22.0x15.0x4.0
T-198-H3	No. 3	700ml	480gm	24.0x16.0x4.0



OVAL ENTRÉE DISH EMBOSS HANDLE
Copper, Stainless Steel, Brass

Item Code	Size	Capacity	Weight	Dimension (cm)
T-628-H1	No. 1	300ml	320gm	19.0x13.0x3.0
T-628-H2	No. 2	500ml	420gm	22.0x15.0x4.3
T-628-H3	No. 3	700ml	500gm	24.0x16.0x4.3



ROUND ENTRÉE DISH
Copper, Stainless Steel

Item Code	Size	Capacity	Weight	Dimension (cm)
T-142-H1	No. 1	300ml	350gm	15.0x15.0x3.5
T-142-H2	No. 2	450ml	450gm	17.0x17.0x4.0

PORTION BOWL



GRAVY BUCKET PAN BRASS HANDLE

Copper, Stainless Steel, Brass

Item Code	Size	Capacity	Weight	Dimension (cm)
T-701-H1	No. 1	250ml	300gm	11.5x11.5x4.0
T-701-H2	No. 2	300ml	370gm	13.5x13.5x4.0
T-701-H3	No. 3	450ml	400gm	15.0x15.0x4.0
T-701-H4	No. 4	800ml	520gm	18.0x18.0x4.5

Item Code	Size	Capacity	Weight	Dimension (cm)
T-108C-H1	No. 1	350ml	330gm	10.0x10.0x9.5
T-108C-H2	No. 2	450ml	400gm	11.0x11.0x11.0
T-108C-H3	No. 3	800ml	600gm	13.0x13.0x16.0



FRY PAN BRASS HANDLE

Copper, Stainless Steel, Brass



Item Code	Size	Capacity	Weight	Dimension (cm)
T-702-H1	No. 1	350ml	350gm	11.5x11.5x5.0
T-702-H2	No. 2	550ml	400gm	13.5x13.5x6.0
T-702-H3	No. 3	800ml	500gm	15.5x15.5x6.0

SAUCE PAN BRASS HANDLE

Copper, Stainless Steel, Brass

Item Code	Size	Capacity	Weight	Dimension (cm)
T-180-H1	No. 1	300ml	350gm	13.0x13.0x6.0
T-180-H2	No. 2	450ml	400gm	15.0x15.0x8.0
T-180-H3	No. 3	600ml	480gm	16.5x16.5x8.0
T-180-H4	No. 4	800ml	600gm	17.5x17.5x9.0
T-180-H5	No. 5	1400ml	750gm	21.0x21.0x10.0



WOK PAN BRASS HANDLE

Copper, Stainless Steel, Brass



BELLY PAN BRASS HANDLE

Copper, Stainless Steel, Brass

Item Code	Size	Capacity	Weight	Dimension (cm)
T-179-H1	No. 1	450ml	330gm	12.0x12.0x5.0
T-179-H2	No. 2	650ml	430gm	14.0x14.0x6.0
T-179-H3	No. 3	1000ml	550gm	16.0x16.0x6.0
T-179-H4	No. 4	1450ml	750gm	18.5x18.5x7.0

PORTION BOWL



OVAL PLATTER
Copper, Stainless Steel

Item Code	Size	Weight	Dimension (cm)
T-105-H1	No. 1	250gm	14.5x14.5x3.8
T-105-H2	No. 2	320gm	16.5x16.5x4.0
T-105-H3	No. 3	400gm	18.5x18.5x5.0
T-105-H4	No. 4	520gm	21.5x21.5x5.0
T-105-H5	No. 5	660gm	24.5x24.5x5.7
T-105A-H6 (Copper)	No. 6	530gm	28.0x28.0x6.3
T-105A-H7 (Copper)	No. 7	580gm	29.5x29.5x9.0

Item Code	Size	Weight	Dimension (cm)
T-106-H1	No. 1	300gm	20.0x14.0x1.8
T-106-H2	No. 2	450gm	25.0x17.0x2.3
T-106-H3	No. 3	580gm	30.0x20.0x2.8



HANDI COVER- DOME
Copper, Stainless Steel, Brass



PUNJABI HANDI COVER - FLAT
Copper, Brass

Item Code	Size	Weight	Dimension (cm)
T-601-H1	No. 1	100gm	12.0x12.0x3.0
T-601-H2	No. 2	120gm	13.0x13.0x4.0
T-601-H3	No. 3	130gm	14.0x14.0x4.0
T-601-H4	No. 4	170gm	16.0x16.0x4.0
T-601-H5	No. 5	210gm	20.0x20.0x4.0
T-601-H6	No. 6	300gm	23.0x23.0x4.0

Item Code	Size	Weight	Dimension (cm)
T-165-H1	No. 1	220gm	13.0x13.0x4.0
T-165-H2	No. 2	260gm	15.0x15.0x4.0
T-165-H3	No. 3	340gm	17.0x17.0x4.0
T-165-H4	No. 4	440gm	20.0x20.0x5.0
T-165-H5	No. 5	620gm	24.0x24.0x5.0
T-601-H6	No. 6	300gm	23.0x23.0x4.0



HANDI COVER - FLAT
Copper, Stainless Steel, Brass



GLASS LID WITH KNOB

Item Code	Size	Weight	Dimension (cm)
T-602-G1	No. 1	150gm	10.5x10.5x2.5
T-602-G2	No. 2	170gm	12.5x12.5x3.0
T-602-G3	No. 3	230gm	14.5x14.5x3.0
T-602-G4	No. 4	430gm	17.5x17.5x3.0
T-602-G5	No. 5	480gm	21.0x21.0x3.0



Item Code : T-181-H1
 Capacity : 150ml
 Weight : 220gm
 Dimension (cm) : 7.0x7.0x4.0

MINI BELLY BOWL
 Copper, Stainless Steel, Brass



Item Code : T-182-H1
 Capacity : 300ml
 Weight : 190gm
 Dimension (cm) : 12.0x12.0x4.0

MINI BELLY PAN
 Copper, Stainless Steel, Brass

Item Code	Size	Weight	Dimension (cm)
T-172-D1	No. 1	270gm	23.5x13.5x3.5
T-172-D2	No. 2	410gm	28.0x20.0x4.5



BREAD BASKET OVAL PERFORATED
 Copper



BREAD BASKET OVAL HAMMER
 Copper

Item Code	Size	Weight	Dimension (cm)
T-703-H1	No. 1	270gm	23.5x13.5x3.5
T-703-H2	No. 2	400gm	28.0x20.0x4.5

Item Code : T-173-H1
 Capacity : 1400ml
 Weight : 1000gm
 Dimension (cm) : 19.0x19.0x14.0



SERVING DONGA
 Copper, Stainless Steel, Brass



SQUARE PLATTER
Copper

Item Code	Size	Weight	Dimension (cm)
T-158-H1	No. 1	300gm	16.0x16.0x2.0
T-158-H2	No. 2	520gm	20.5x20.5x2.0
T-158-H3	No. 3	830gm	23.0x23.0x2.0
T-158-H4	No. 4	1150gm	31.0x31.0x2.0

Item Code	Size	Weight	Dimension (cm)
T-159-H1	No. 1	220gm	10.0x20.0x2.0
T-159-H2	No. 2	380gm	26.0x13.0x2.0
T-159-H3	No. 3	480gm	30.0x15.5x2.0



OVAL PLATTER
Copper



RECTANGULAR PLATTER
Copper

Item Code	Size	Weight	Dimension (cm)
T-160-H1	No. 1	420gm	25.0x12.5x2.0
T-160-H2	No. 2	580gm	30.0x15.0x2.0
T-160-H3	No. 3	610gm	28.0x17.5x2.0



CHIP N DIP - FLAT
Copper, Stainless Steel

Item Code : T-167-H1
Weight : 560gm
Dimension (cm) : 20.0x20.0x7.0



CHIP N DIP - ROUND
Copper, Stainless Steel

Item Code : T-168-H1
Capacity : 600ml
Weight : 520gm
Dimension (cm) : 16.5x16.5x13.0



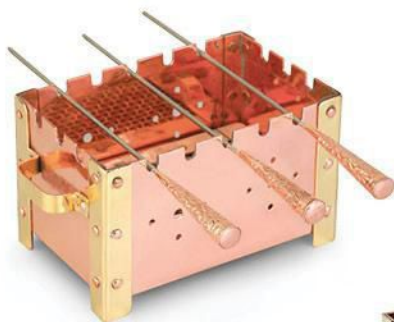
CHIP N DIP - OVAL
Copper, Stainless Steel

Item Code : T-169-H1
Capacity : 500ml
Weight : 470gm
Dimension (cm) : 22.0x15.0x11.0



TABLE TANDOOR
Copper, Stainless Steel, Brass, Wood

Item Code : T-112-H1
Weight : 1200gm
Dimension (cm) : 11.5x4.0x30.0



BAR BE CUE - SMALL
Copper, Stainless Steel, Brass

Item Code : T-113-P1
No. : No. 1
Weight : 1250gm
Dimension (cm) : 18.5x12.0x11.0



BAR BE CUE - BIG
Copper, Stainless Steel, Brass

Item Code : T-113-P3
No. : No. 3
Weight : 2330gm
Dimension (cm) : 36.0x26.0x12.0



BAR BE CUE - MEDIUM
Copper, Stainless Steel, Brass

Item Code : T-113-P2
No. : No. 2
Weight : 1750gm
Dimension (cm) : 26.5x16.5x12.0



OVAL SNACK WARMER
Copper, Stainless Steel, Brass

Item Code : T-166-P1
Weight : 1850gm
Dimension (cm) : 29.0x19.0x11.0

Item Code	Size	Weight	Dimension (cm)
T-109-P1	No. 1	1100gm	19.0x19.0x11.5
T-109-P2	No. 2	1500gm	21.0x21.0x15.0



ROUND SNACK WARMER
Copper, Stainless Steel, Brass



HALF OVAL SNACK WARMER
Copper, Stainless Steel, Brass

Item Code : T-183-P1
Weight : 1900gm
Dimension (cm) : 30.0x19.0x16.0

Item Code : T-184-P1
Weight : 2800gm
Dimension (cm) : 31.0x31.0x9.0



JUMBO SNACK WARMER
Copper, Stainless Steel, Brass



SQUARE SNACK WARMER
Copper, Stainless Steel, Brass

Item Code : T-185-P1
Weight : 1700gm
Dimension (cm) : 22.0x18.0x9.0



OVAL SNACK WARMER - DIAMOND CUT
Copper, Stainless Steel, Brass

Item Code : T-186-D1
Weight : 2300gm
Dimension (cm) : 38.0x26.0x9.5



RECTANGULAR SNACK WARMER - DIAMOND CUT
Copper, Stainless Steel, Brass

Item Code : T-187-D1
Weight : 2450gm
Dimension (cm) : 35.0x22.0x9.5



SQUARE JUMBO SNACK WARMER - DIAMOND CUT
Copper, Stainless Steel, Brass

Item Code : T-188-D1
Weight : 2450gm
Dimension (cm) : 30.0x30.0x10.0

Item Code : T-189-D1
Weight : 2450gm
Dimension (cm) : 32.0x32.0x10.5



OCTAGONAL SNACK WARMER - DIAMOND CUT
Copper, Stainless Steel, Brass



SIGRI
Copper, Brass

Item Code	Size	Weight	Dimension (cm)
T-110-H1	No. 1	190gm	9.0x9.0x9.5
T-110-H2	No. 2	210gm	10.0x10.0x10.0
T-110-H3	No. 3	270gm	12.0x12.0x11.0

Item Code	Size	Weight	Dimension (cm)
T-175-D1	No. 1	430gm	13.0x13.0x8.0
T-175-D2	No. 2	620gm	17.0x17.0x9.0
T-175-D3	No. 3	1000gm	22.0x22.0x12.0



BURNER STAND
Copper, Brass



BUFFET SET - ROUND STAND
Copper, Stainless Steel, Brass

Item Code	Size	Capacity	Weight	Dimension (cm)
T-176-H1	No. 3	800ml	1950gm	17.0x17.0x39.0
T-176-H2	No. 4	1300ml	2450gm	20.5x20.5x46.0
T-176-H3	No. 5	1900ml	3100gm	23.5x32.5x48.0



TIFFIN
Copper, Stainless Steel, Brass



Item Code : T-111-P1



BUFFET SET - ROLL TOP
Copper, Stainless Steel, Brass

Item Code	Size	Capacity	Weight	Dimension (cm)
T-177-H1	No. 1	300ml	1700gm	19.0x19.0x21.0
T-177-H2	No. 2	600ml	2100gm	20.0x20.0x21.0
T-177-H3	No. 3	800ml	2750gm	24.0x24.0x24.0
T-177-H4	No. 4	1300ml	3250gm	27.0x27.0x25.0
T-177-H5	No. 5	1900ml	4250gm	31.0x31.0x27.0
T-177-H6	No. 6	3000ml	5400gm	35.0x35.0x29.0
T-177-H7	No. 7	3400ml	5700gm	36.0x36.0x32.0



BUFFET SET - SQUARE STAND
Copper, Stainless Steel, Brass

Item Code	: T-178-H1
No.	: No. 7
Capacity	: 3400ml
Weight	: 5000gm
Dimension (cm)	: 24.0x24.0x64.0



LAZY SUSAN - REVOLVING BUFFET SET
Copper, Stainless Steel, Brass

T-147-H1

Item Name	Size	Capacity	Weight	Dimension (cm)
Stand X 1	No. 1	---	4200gm	47.0x47.0x29.0
Handi X 3	No. 2	800ml	600gm	17.0x17.0x7.5
Handi Cover - Dome X 3	No. 3	---	400gm	18.0x18.0x5.0

THALI SET



SOVEREIGN THALI SET - Cu/ SS - SMALL (5 PCS SET)
Copper, Steel

T-610-H1

Item Name	Capacity	Weight	Dimension (cm)
SOVEREIGN THALI - Cu/ SS - SMALL X 1	---	800gm	25.5x25.5x3.0
SOVEREIGN KATORI - Cu/ SS X 2	100ml	140gm	7.0x7.0x3.5
SOVEREIGN GLASS - Cu/ SS X 1	250ml	200gm	8.0x8.0x10.0
DESSERT SPOON - Cu/ SS X 1	---	50gm	4.0x18.0x1.0

T-609-H1

Item Name	Capacity	Weight	Dimension (cm)
SOVEREIGN THALI - Cu/ SS - BIG X 1	---	1400gm	33.0x33.0x4.0
SOVEREIGN KATORI - Cu/ SS X 3	100ml	140gm	7.0x7.0x3.5
SOVEREIGN GLASS - Cu/ SS X 1	250ml	180gm	8.0x8.0x10.0
SOVEREIGN RICE BOWL - Cu/ SS X 1	300ml	260gm	12.0x12.0x3.0
SOVEREIGN CHUTNEY KATORI - Cu/ SS X 1	100ml	90gm	6.0x6.0x3.0
DESSERT SPOON - Cu/ SS X 1	---	50gm	18.0x4.0x2.0



SOVEREIGN THALI SET - Cu/ SS - BIG (8 PCS SET)
Copper, Stainless Steel



SOVEREIGN THALI SET - Br/ SS - BIG (9 PCS SET)
Brass, Stainless Steel

P-609-H1

Item Name	Capacity	Weight	Dimension (cm)
SOVEREIGN THALI - Br/ SS - BIG X 1	---	1400gm	33.0x33.0x4.0
SOVEREIGN KATORI - Br/ SS X 4	100ml	140gm	7.0x7.0x3.5
SOVEREIGN GLASS - Br/ SS X 1	250ml	260gm	12.0x12.0x3.0
SOVEREIGN RICE BOWL - Br/ SS X 1	50ml	90gm	6.0x6.0x3.0
SOVEREIGN CHUTNEY KATORI - Br/ SS X 1	250ml	200gm	8.0x8.0x10.0
DESSERT SPOON - Br/ SS X 1	---	50gm	18.0x4.0x2.0

T-705-H1

Item Name	Capacity	Weight	Dimension (cm)
SOVEREIGN THALI - BIG - Cu X 1	---	850gm	33.0x33.0x4.0
MUKHWAS KATORI X 3	150ml	90gm	10.5x10.5x4.0
SOVEREIGN GLASS - Cu X 1	250ml	160gm	8.0x8.0x10.0
DESSERT SPOON - Cu/ SS X 1	---	70gm	18.0x4.0x2.0



SOVEREIGN THALI SET - CU - BIG (6 PCS SET)
Copper

THALI SET



MAJESTIC THALI SET (7Pcs.)
Copper, Stainless Steel, Brass

T-161-H1

Item Name	Capacity	Weight	Dimension (cm)
MOON WITH BRASS HANDLE - SMALL X 1	---	950gm	40.0x12.0x9.0
MOON PLATTER - SMALL X 1	---	550gm	24.0x24.0x1.5
HANDI KATORI - SMALL X 5	100ml	190gm	11.0x11.0x5.0

T-161-H2

Item Name	Capacity	Weight	Dimension (cm)
MOON WITH BRASS HANDLE - BIG X 1	---	1050gm	48.0x13.0x9.0
MOON PLATTER - BIG X 1	---	1100gm	34.0x34.0x2.0
HANDI KATORI - BIG X 5	250ml	250gm	11.0x11.0x5.0

T-133-H1

Item Name	Capacity	Weight	Dimension (cm)
THALI - BIG X 1	---	1200gm	34.0x34.0x3.5
FLAT KATORI X 3	100ml	140gm	8.0x8.0x3.5
HALWA PLATE X 1	250ml	160gm	12.0x12.0x2.0
AMRAPALI GLASS - Cu/SS X 1	350ml	200gm	7.5x7.5x10.0
DESSERT SPOON - Cu/SS X 1	---	50gm	18.0x4.0x2.0



THALI SET (7Pcs.)
Copper, Stainless Steel



OVAL THALI SET - Cu (7 Pcs Set)
Copper

T-706-H1

Item Name	Capacity	Weight	Dimension (cm)
OVAL THALI - Cu X 1	---	1000gm	43.0x31.0x2.0
MUKHWAS KATORI X 4	100ml	90gm	10.5x10.5x4.0
SOVEREIGN GLASS X 1	350ml	160gm	8.0x8.0x10.0
DESSERT SPOON - Cu/SS X 1	---	50gm	18.0x4.0x2.0

T-707-H1

Item Name	Capacity	Weight	Dimension (cm)
FULL PLATE X 1	---	700gm	27.0x27.0x2.0
OMEGA KATORI X 2	100ml	130gm	8.5x8.5x3.5
AMRAPALI GLASS - Cu X 1	250ml	85gm	7.5x7.5x10.0
DESSERT SPOON - Cu/SS X 1	---	50gm	18.0x4.0x2.0



PLATE SET
Copper, Stainless Steel



SOVEREIGN THALI - Cu/ SS - SMALL
Copper, Stainless Steel



Item Name	Item Code	Weight	Dimension (cm)
SOVEREIGN THALI Cu/ SS - SMALL	T-708-H1	800gm	25.5x25.5x3.0
SOVEREIGN THALI Cu/SS - BIG	T-708-H2	1400gm	33.0x33.0x4.0

SOVEREIGN THALI - Cu/SS - BIG
Copper, Stainless Steel



SOVEREIGN THALI - CU
Copper

Item Name	Item Code	Weight	Dimension (cm)
SOVEREIGN THALI - CU	T-709-H1	850gm	33.0x33.0x4.0
SOVEREIGN THALI - Br/SS	T-710-H1	1400gm	33.0x33.0x4.0



SOVEREIGN THALI - Br/ SS
Brass, Stainless Steel



THALI SMALL
Copper, Stainless Steel



THALI BIG
Copper, Stainless Steel

Item Name	Item Code	Capacity	Weight	Dimension (cm)
THALI - SMALL	T-129-H1	No. 1	950gm	31.0x31.0x3.5
THALI - BIG	T-129-H2	No. 2	1200gm	34.0x34.0x3.5



QUARTER PLATE
Copper, Stainless Steel



FULL PLATE
Copper, Stainless Steel



OVAL THALI - CU
Copper

Item Name	Item Code	Weight	Dimension (cm)
QUARTER PLATE	T-131-H1	400gm	20.0x20.0x2.0
FULL PLATE	T-130-H1	700gm	27.0x27.0x2.0
OVAL THALI - CU	T-711-H1	1000gm	43.0x31.0x2.0

TABLE ESSENTIALS



AMRAPALI GLASS - Cu/SS
Copper, Stainless Steel



TAPER GLASS - SMALL
Copper, Stainless Steel



TAPER GLASS - BIG
Copper, Stainless Steel



MUGLAI GLASS - SMALL
Copper, Stainless Steel



MUGLAI GLASS - BIG
Copper, Stainless Steel



SOVEREIGN GLASS
Copper, Stainless Steel

Item Name	Item Code	No.	Capacity	Weight	Dimension (cm)
AMRAPALI GLASS - Cu/SS	T-116-H1	---	350ml	200gm	7.5x7.5x10.0
TAPER GLASS - SMALL	T-118-H1	No. 1	250ml	230gm	8.0x8.0x9.5
TAPER GLASS - BIG	T-118-H2	No. 2	500ml	320gm	10.0x10.0x13.0
MUGLAI GLASS - SMALL	T-117-H1	No. 1	350ml	260gm	8.5x8.5x12.0
MUGLAI GLASS - BIG	T-117-H2	No. 2	650ml	450gm	10.0x10.0x15.5
SOVEREIGN GLASS - Cu/SS	T-712-H1	---	250ml	200gm	8.0x8.0x10.0



FLAT KATORI
Copper, Stainless Steel



OMEGA KATORI
Copper, Stainless Steel



SOVEREIGN KATORI - Cu/SS
Copper, Stainless Steel



SOVEREIGN KATORI - Br/SS
Brass, Stainless Steel

Item Name	Item Code	Capacity	Weight	Dimension (cm)
FLAT KATORI	T-122-H1	100ml	140gm	8.0x8.0x3.5
OMEGA KATORI	T-121-H1	100ml	130gm	8.5x8.5x3.5
SOVEREIGN KATORI - Cu/SS	T-713-H1	100ml	140gm	7.0x7.0x3.5
SOVEREIGN KATORI - Br/SS	T-714-H1	100ml	140gm	7.0x7.0x3.5



FLAT CHUTNEY KATORI
Copper, Stainless Steel



OMEGA CHUTNEY KATORI
Copper, Stainless Steel



SOVEREIGN CHUTNEY KATORI - Cu/SS
Copper, Stainless Steel



SOVEREIGN CHUTNEY KATORI - Br/SS
Brass, Stainless Steel

Item Name	Item Code	Capacity	Weight	Dimension (cm)
OMEGA CHUTNEY KATORI	T-145-H1	40ml	50gm	6.5x6.5x2.5
FLAT CHUTNEY KATORI	T-715-H1	50ml	85gm	6.5x6.5x3.5
SOVEREIGN CHUTNEY KATORI - Cu/SS	T-716-H1	50ml	90gm	6.0x6.0x3.5
SOVEREIGN CHUTNEY KATORI - Br/SS	T-717-H1	50ml	90gm	6.0x6.0x3.5

TABLE ESSENTIALS



HALWA PLATE
Copper, Stainless Steel



SOVEREIGN RICE BOWL - Cu/SS
Copper, Stainless Steel



SOVEREIGN RICE BOWL - Br/SS
Brass, Stainless Steel

Item Name	Item Code	Capacity	Weight	Dimension (cm)
HALWA PLATE	T-146-H1	100ml	160gm	12.0x12.0x2.0
SOVEREIGN RICE BOWL - Cu/SS	T-718-H1	250ml	240gm	12.0x12.0x3.5
SOVEREIGN RICE BOWL - Br/SS	T-719-H1	250ml	240gm	12.0x12.0x3.5



SAUCE POT
Copper, Stainless Steel

Item Code : T-132-H1
Capacity : 100ml
Weight : 190gm
Dimension (cm) : 9.5 x 9.5x4.5



MUKHWAS KATORI
Copper

Item Code : T-720-H1
Capacity : 150ml
Weight : 90gm
Dimension (cm) : 10.5x10.5x4.0



ICE CREAM CUP
Copper, Stainless Steel, Brass



DESSERT BOWL
Copper, Stainless Steel, Brass



SOUP BOWL
Copper, Stainless Steel

Item Name	Item Code	Capacity	Weight	Dimension (cm)
ICE CREAM CUP	T-128-H1	100ml	200gm	10.0x10.0x9.0
DESSERT BOWL	T-721-H1	100ml	150gm	10.0x10.0x9.0
SOUP BOWL	T-120-H1	250ml	220gm	11.0x11.0x5.5

TABLE ESSENTIALS



Item Code : T-123-H1
 Capacity : 250ml
 Weight : 220gm
 Dimension (cm) : 11.0x11.0x5.5

FINGER BOWL
 Stainless Steel, Copper



UNDER LINER
 Stainless Steel, Copper

Item Code : T-124-H1
 Weight : 320gm
 Dimension (cm) : 18.0x18.0x2.0

Item Code : T-143-H1
 Capacity : 250ml
 Weight : 220gm
 Dimension (cm) : 11.0x11.0x5.5

ARABIAN BOWL
 Stainless Steel, Copper



UNDER LINER
 Stainless Steel, Copper

Item Code : T-144-H1
 Weight : 250gm
 Dimension (cm) : 16.0x16.0x2.25

TABLE ACCESSORIES



Item Name	Item Code	Weight	Dimension (cm)
STRAW HOLDER	T-134-P1	170gm	4.0x4.0x9.5
CANDLE STAND	T-135-P1	280gm	5.0x5.0x18.0
TOOTHPICK HOLDER	T-136-P1	115gm	4.0x4.0x7.0
BUD VASE	T-137-P1	180gm	4.0x4.0x15.0
SALT N PEPPER	T-138-P1	290gm	8.0x8.0x7.5



PICKLE DISH 2 COMP'T
Stainless Steel, Copper, Brass

PICKLE DISH 3 COMP'T
Stainless Steel, Copper, Brass

PICKLE DISH 4 COMP'T
Stainless Steel, Copper, Brass

Item Name	Item Code	Capacity	Weight	Dimension (cm)
PICKLE DISH 2 COMP'T	T-125-H1	200ml	600gm	21.0x21.0x17.0
PICKLE DISH 3 COMP'T	T-126-H1	300ml	850gm	21.0x21.0x17.0
PICKLE DISH 4 COMP'T	T-127-H1	400ml	1150gm	25.0x25.0x20.5



CRUET SET - HANGING
Brass, Copper Plated

Item Code : T-608-P1
Weight : 550gm
Dimension (cm) : 11.0x11.0x5.5

Item Code : T-163-H1
Weight : 220gm
Dimension (cm) : 15.0x7.5x8.0



NAPKIN HOLDER
Copper, Brass



MUKHWAS TRAY
Copper, Brass

Item Code : T-607-D1
Capacity : 450ml
Weight : 340gm
Dimension (cm) : 10.0x10.0x5.0

TABLE ACCESSORIES



TEA SET (3 PCS SET)
Copper, Stainless Steel, Brass

T-174-H1

Item	Capacity	Weight	Dimension (cm)
SUGAR POT X 1	150ml	250gm	14.0x14.0x9.0
TEA POT X 1	550ml	600gm	21.0x21.0x13.0
MILK POT X 1	150ml	250gm	12.0x12.0x8.5



KETTLE - SMALL
Copper, Brass

Item Code : T-604-H1
Capacity : 250ml
Weight : 270gm
Dimension (cm) : 3.5x3.5x9.0



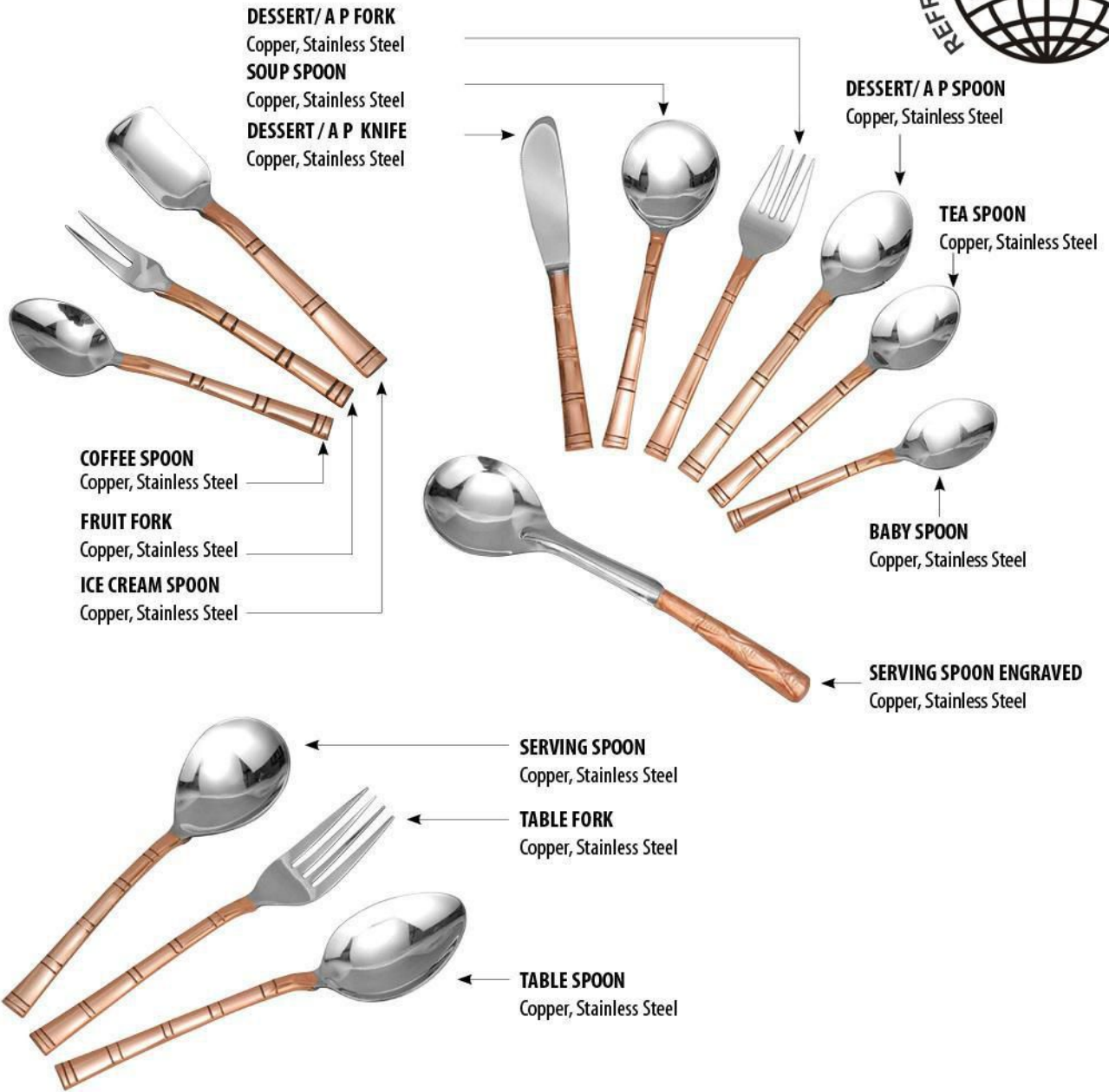
KETTLE - WOOD HANDLE
Copper, Brass

Item Code	Size	Capacity	Weight	Dimension (cm)
T-605-H1	No. 1	1400ml	850gm	9.0x9.0x18.0
T-605-H2	No. 2	2100ml	1050gm	11.0x11.0x18.0

Item Code : T-606-H1
Capacity : 2100ml
Weight : 1250gm
Dimension (cm) : 9.0x9.0x20.0



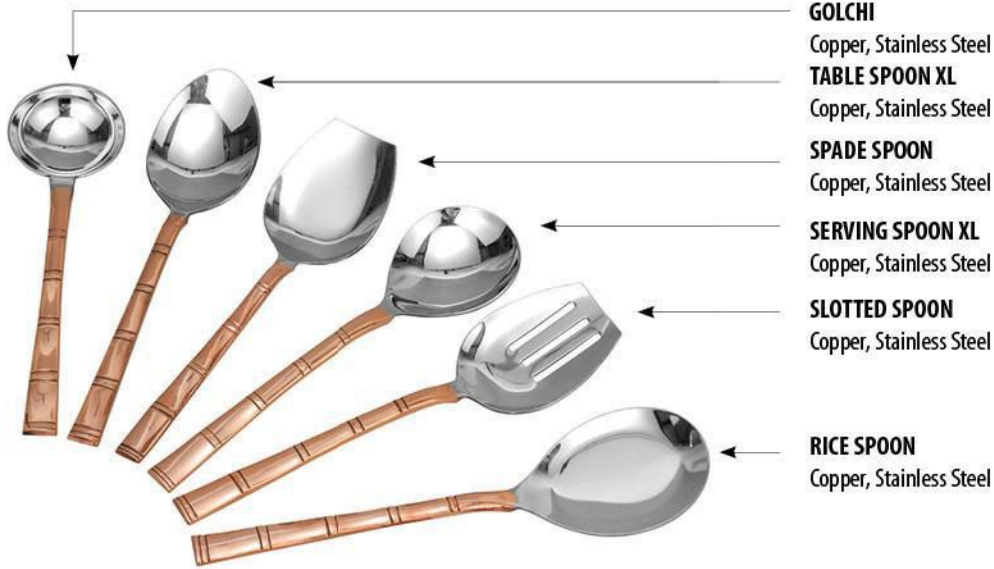
KETTLE - BRASS HANDLE
Copper, Brass



BAMBOO SERIES

Item Name	Item Code	Weight	Dimension (cm)
COFFEE SPOON	T-201-B1	20gm	12.0x2.5x2.0
FRUIT FORK	T-202-B1	15gm	12.0x2.0x2.0
ICE CREAM SPOON	T-203-B1	30gm	13.0x2.5x2.0
TEA SPOON	T-204-B1	30gm	14.0x3.0x2.0
BABY SPOON	T-205-B1	35gm	16.0x3.5x2.0
DESSERT /AP SPOON	T-206-B1	50gm	18.0x4.0x2.0
DESSERT /AP FORK	T-207-B1	40gm	18.0x3.0x2.0
SOUP SPOON	T-208-B1	50gm	18.0x5.0x2.0
DESSERT/AP KNIFE	T-209-B1	65gm	19.0x2.5x0.5
TABLE SPOON	T-210-B1	70gm	20.0x5.0x2.0
TABLE FORK	T-211-B1	50gm	21.0x3.0x2.0
SERVING SPOON	T-212-B1	70gm	21.0x5.5x2.0
SERVING SPOON - ENGRAVED	T-213-B1	50gm	21.0x5.5x3.0

CUTLERY



- GOLCHI**
Copper, Stainless Steel
- TABLE SPOON XL**
Copper, Stainless Steel
- SPADE SPOON**
Copper, Stainless Steel
- SERVING SPOON XL**
Copper, Stainless Steel
- SLOTTED SPOON**
Copper, Stainless Steel
- RICE SPOON**
Copper, Stainless Steel



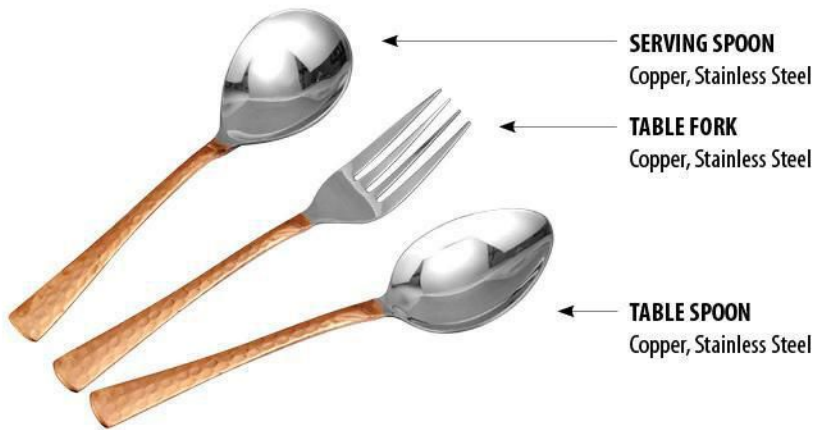
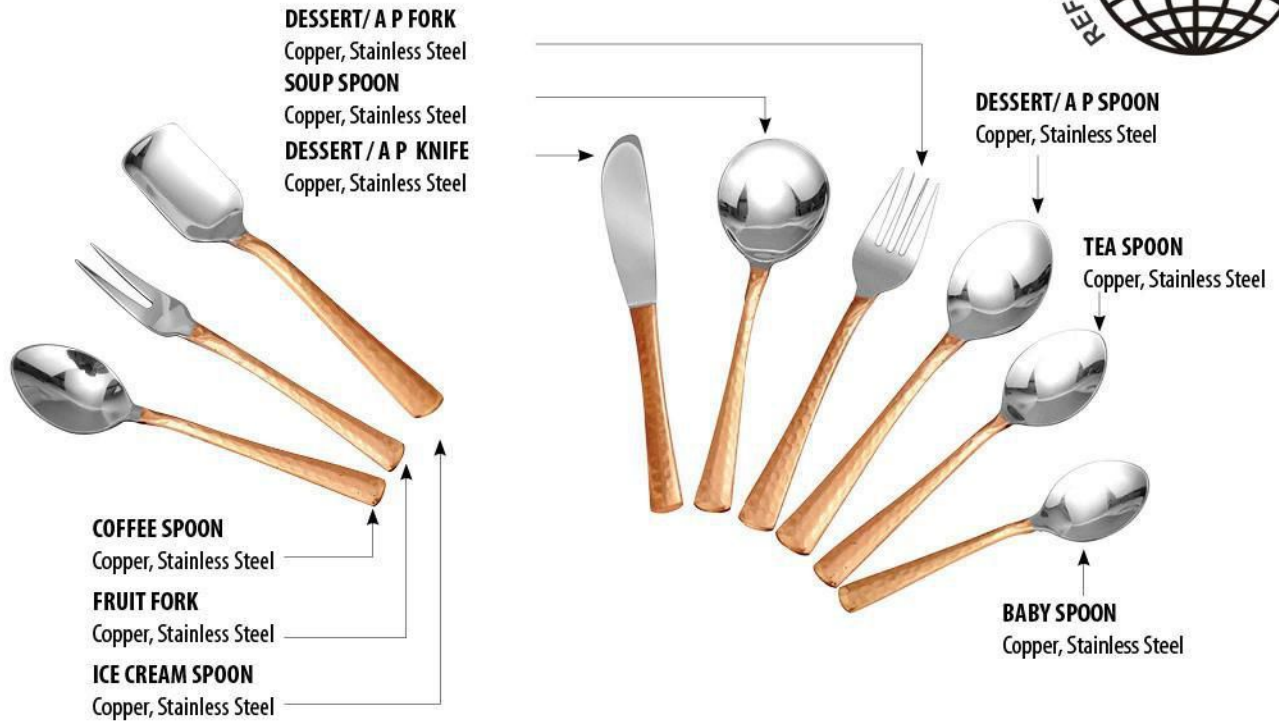
- CHAFING DISH LADLE**
Copper, Stainless Steel
- CHAFING DISH SERVING SPOON**
Copper, Stainless Steel
- CHAFING DISH PAN SPOON**
Copper, Stainless Steel

TABLE KNIFE
Copper, Stainless Steel

BABY FORK
Copper, Stainless Steel

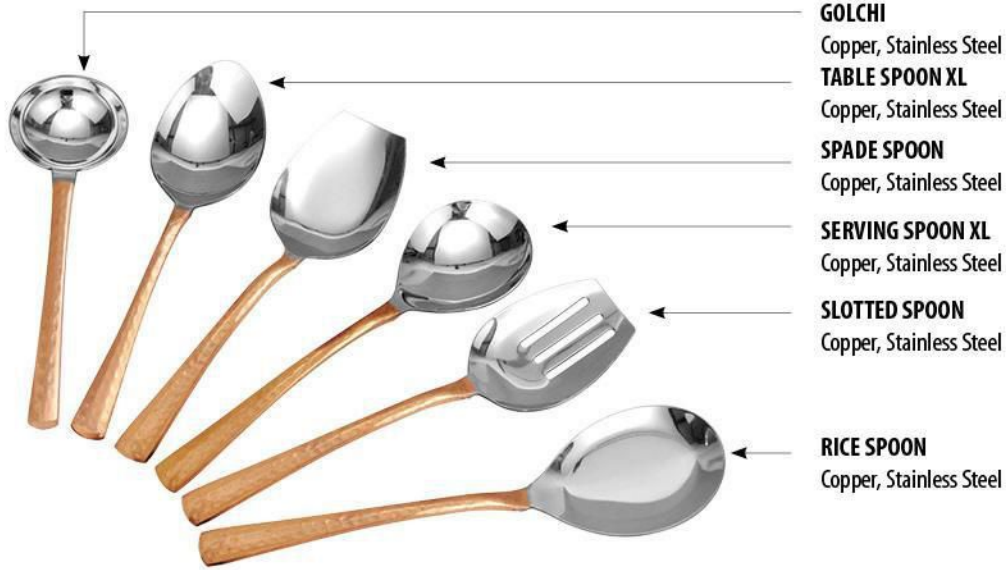
BAMBOO SERIES

Item Name	Item Code	Weight	Dimension (cm)
CHAFING DISH LADLE SPOON	T-214-B1	220gm	36.0x8.5x3.0
CHAFING DISH SERVING SPOON	T-215-B1	200gm	36.0x7.0x3.0
RICE SPOON	T-216-B1	120gm	27.0x8.0x3.0
SLOTTED SPOON	T-217-B1	120gm	26.0x7.0x3.0
SERVING SPOON - XL	T-218-B1	120gm	26.0x7.0x3.0
SPADE SPOON	T-219-B1	120gm	226.0x7.0x3.0
TABLE SPOON - XL	T-220-B1	120gm	26.0x7.0x3.0
GOLCHI	T-221-B1	120gm	27.0x7.0x3.0
CHAFING DISH PAN DISH	T-222-B1	200gm	37.0x6.5x3.0
BABY FORK	T-223-B1	30gm	16.0x3.5x2.0
TABLE KNIFE	T-224-B1	85gm	22.0x2.5x0.5



HAMMER SERIES

Item Name	Item Code	Weight	Dimension (cm)
COFFEE SPOON	T-201-H1	20gm	12.0x2.5x2.0
FRUIT FORK	T-202-H1	15gm	12.0x2.0x2.0
ICE CREAM SPOON	T-203-H1	30gm	13.0x2.5x2.0
TEA SPOON	T-204-H1	30gm	14.0x3.0x2.0
BABY SPOON	T-205-H1	35gm	16.0x3.5x2.0
DESSERT /AP SPOON	T-206-H1	50gm	18.0x4.0x2.0
DESSERT /AP FORK	T-207-H1	40gm	18.0x3.0x2.0
SOUP SPOON	T-208-H1	50gm	18.0x5.0x2.0
DESSERT/AP KNIFE	T-209-H1	65gm	19.0x2.5x0.5
TABLE SPOON	T-210-H1	70gm	20.0x5.0x2.0
TABLE FORK	T-211-H1	50gm	21.0x3.0x2.0
SERVING SPOON	T-212-H1	70gm	21.0x5.5x2.0



GOLCHI

Copper, Stainless Steel

TABLE SPOON XL

Copper, Stainless Steel

SPADE SPOON

Copper, Stainless Steel

SERVING SPOON XL

Copper, Stainless Steel

SLOTTED SPOON

Copper, Stainless Steel

RICE SPOON

Copper, Stainless Steel

TABLE KNIFE
Copper, Stainless Steel



BABY FORK
Copper, Stainless Steel



HAMMER SERIES

Item Name	Item Code	Weight	Dimension (cm)
RICE SPOON	T-216-H1	120gm	27.0x8.0x3.0
SLOTTED SPOON	T-217-H1	120gm	26.0x7.0x3.0
SERVING SPOON - XL	T-218-H1	120gm	26.0x7.0x3.0
SPADE SPOON	T-219-H1	120gm	226.0x7.0x3.0
TABLE SPOON - XL	T-220-H1	120gm	26.0x7.0x3.0
GOLCHI	T-221-H1	120gm	27.0x7.0x3.0
BABY FORK	T-223-H1	30gm	16.0x3.5x2.0
TABLE KNIFE	T-224-H1	85gm	22.0x2.5x0.5



GOBLET BIG
Copper, Brass



CHAMPAGNE GLASS
Brass/ Copper Plated



GOBLET SMALL
Copper, Brass

Item Name	Item Code	Capacity	Weight	Dimension (cm)
GOBLET BIG	T-190-H1	250ml	200gm	10.0x10.0x18.0
CHAMPAGNE GLASS	T-192-H1	150ml	200gm	6.0x6.0x24.0
GOBLET SMALL	T-191-H1	250ml	200gm	6.5x6.5x23.0



MARGARITA GLASS
Copper, Brass



MARTINI GLASS
Copper, Brass



MARTINI GLASS - SS
Copper, Stainless Steel, Brass

Item Name	Item Code	Capacity	Weight	Dimension (cm)
MARGARITA GLASS	T-722-H1	250ml	250gm	12.0x12.0x18.0
MARTINI GLASS	T-194-H1	250ml	200gm	12.5x12.5x17.0
MARTINI GLASS - SS	T-193-H1	250ml	200gm	12.5x12.5x17.0



MOSCOW MULE MUG DIAMOND
Copper, Brass

Item Code : T-611-D1
Capacity : 500ml
Weight : 160gm
Dimension (cm) : 8.5x8.5x9.5

Item Code : T-170-H1
Capacity : 500ml
Weight : 150gm
Dimension (cm) : 8.5x8.5x10.0



MOSCOW MULE MUG HAMMER
Copper, Brass | Inside Chrome Plated



ICE BUCKET
Copper, Stainless Steel, Brass



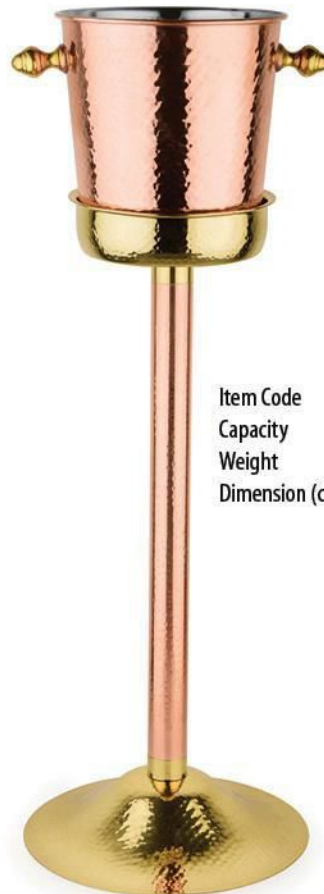
WINE BOTTLE BUCKET
Copper, Brass

Item Name	Item Code	Capacity	Weight	Dimension (cm)
ICE BUCKET	T-114-H1	1100ml	710gm	13.0x13.0x14.0
WINE BOTTLE BUCKET	T-156-H1	6000ml	2400gm	30.0x21.0x21.0



Item Code : P-157A-H1
Capacity : 5000ml
Weight : 3500gm
Dimension (cm) : 20.0x20.0x78.0

CHAMPAGNE BUCKET WITH STAND
Brass



Item Code : T-157B-H1
Capacity : 5000ml
Weight : 3250gm
Dimension (cm) : 20.0x20.0x78.0

CHAMPAGNE BUCKET WITH STAND
Stainless Steel Copper & Brass Plated



DISPLAY PLATTER - OVAL
Copper

Item Code	Size.	Weight	Dimension (cm)
T-612-H1	No. 1	700gm	38.0x16.5x5.0
T-612-H2	No. 2	1000gm	49.0x20.0x6.5

Item Code	Size	Weight	Dimension (cm)
T-613-H1	No. 1	1500gm	54.0x22.0x6.0
T-613-H2	No. 2	1950gm	58.0x26.0x8.0



DISPLAY PLATTER - RECTANGULAR
Copper



DISPLAY PLATTER - ROUND DEEP
Copper

Item Code	Size	Weight	Dimension (cm)
T-614-H1	No. 1	1040gm	29.0x29.0x6.0
T-614-H2	No. 2	1450gm	36.0x36.0x9.0

Item Code	Size	Weight	Dimension (cm)
T-615-H1	No. 1	900gm	30.0x30.0x5.0
T-615-H2	No. 2	1450gm	36.0x36.0x6.0



DISPLAY PLATTER - ROUND FLAT
Copper



DISPLAY PLATTER - SQUARE
Copper

Item Code	No.	Weight	Dimension (cm)
T-616-H1	No. 1	1200gm	28.0x28.0x7.5
T-616-H2	No. 2	1750gm	37.0x37.0x9.0

DISPLAY ACCESSORIES



DISPLAY RISER - ROUND FLAT
Copper, Brass

Item Code	Size	Weight	Dimension (cm)
T-154-H1	No. 1	1550gm	26.0x26.0x17.0
T-154-H2	No. 2	2800gm	36.0x26.0x22.5
T-154-H3	No. 3	4300gm	46.0x46.0x27.0

Item Code	Size	Weight	Dimension (cm)
T-153-H1	No. 1	2000gm	26.0x26.0x17.0
T-153-H2	No. 2	3500gm	36.0x36.0x22.0
T-153-H3	No. 3	5500gm	46.0x46.0x28.0



DISPLAY RISER - SQUARE
Copper, Brass

Item Code	Size	Weight	Dimension (cm)
T-155-H1	No. 1	1650gm	24.0x24.0x20.0
T-155-H2	No. 2	2850gm	34.0x34.0x27.0
T-155-H3	No. 3	4450gm	43.0x43.0x35.0



DISPLAY RISER - ROUND DEEP
Copper, Brass

Item Code	Size	Weight	Dimension (cm)
P-139-P1	No. 1	300gm	15.2x15.2
P-139-P2	No. 2	500gm	20.3x20.3
P-139-P3	No. 3	750gm	25.4x25.4
P-139-P4	No. 4	1200gm	30.5x30.5
P-139-P5	No. 5	1750gm	35.6x35.6
P-139-P6	No. 6	2250gm	40.6x40.6
P-139-P7	No. 7	2900gm	48.3x48.3
P-139-P8	No. 8	3800gm	50.8x50.8
P-139-P9	No. 9	4500gm	61.0x61.0
P-139-P10	No. 10	6500gm	76.2x76.2



BRASS URLI



COPPER URLI

Item Code	Size	Weight	Dimension (cm)
T-139-P1	No. 1	300gm	15.2x15.2
T-139-P2	No. 2	500gm	20.3x20.3
T-139-P3	No. 3	750gm	25.4x25.4
T-139-P4	No. 4	1200gm	30.5x30.5
T-139-P5	No. 5	1750gm	35.6x35.6
T-139-P6	No. 6	2250gm	40.6x40.6
T-139-P7	No. 7	2900gm	48.3x48.3
T-139-P8	No. 8	3800gm	50.8x50.8
T-139-P9	No. 9	4500gm	61.0x61.0
T-139-P10	No. 10	6500gm	76.2x76.2

CHAFING DISH



ROUND CHAFING DISH - ROYAL
Copper, Stainless Steel, Brass

Item Code	Size	Capacity	Weight
T-148-D1	No. 1	4000ml	5600gm
T-148-D2	No. 2	6000ml	6500gm
T-148-D3	No. 3	8000ml	7500gm



ROUND CHAFING DISH - SOVEREIGN
Copper, Stainless Steel, Brass

Item Code	Size	Capacity	Weight
T-149-H1	No. 1	6000ml	9750gm
T-149-H2	No. 2	8000ml	10250gm



ROUND CHAFING DISH - REGAL
Copper, Stainless Steel, Brass

Item Code	Size	Capacity	Weight
T-150-P1	No. 1	4000ml	6300gm
T-150-P2	No. 2	6000ml	7000gm
T-150-P3	No. 3	8000ml	8000gm



ROUND CHAFING DISH - ARISTOCRAT
Copper, Stainless Steel, Brass

Item Code	Size	Capacity	Weight
T-151-P1	No. 1	4000ml	6400gm
T-151-P2	No. 2	6000ml	7200gm
T-151-P3	No. 3	8000ml	8100gm



ROUND CHAFING DISH - MAJESTIC
Copper, Stainless Steel, Brass

Item Code	Size	Capacity	Weight
T-152-H1	No. 1	4000ml	5750gm
T-152-H2	No. 2	6000ml	6750gm
T-152-H3	No. 3	8000ml	7500gm

CHAFING DISH



Item Code : T-617-H1
Capacity : 7000ml
Weight : 11500gm

ROUND CHAFING DISH - EMINENT
Copper, Stainless Steel



ROUND CHAFING DISH - SUPERB
Copper, Stainless Steel

Item Code : T-619-H1
Capacity : 7000ml
Weight : 8750gm



ROUND CHAFING DISH - SUPREME
Copper, Stainless Steel

Item Code : T-618-H1
Capacity : 7000ml
Weight : 11000gm



ROUND CHAFING DISH - TWINS
Copper, Stainless Steel, Iron

Item Code : T-620-H1
Capacity : 7000ml
Weight : 35000gm



ROUND CHAFING DISH - SWING
Copper, Stainless Steel, Iron

Item Code : T-621-H1
Capacity : 7000ml
Weight : 175000gm

FAMILY STORAGE



MATKA WITH TAP
Copper, Brass, Stainless Steel

Item Code	Size	Capacity	Weight	Dimension (cm)
T-306-H1	No. 1	3000ml	750gm	16.0x16.0x24.0
T-306-H2	No. 2	4700ml	1000gm	18.0x18.0x26.0
T-306-H3	No. 3	7500ml	1300gm	21.0x21.0x32.0
T-306-H4	No. 4	10800ml	1750gm	24.0x24.0x33.0
T-306-H5	No. 5	14000ml	2100gm	27.0x27.0x35.0
T-306-H6	No. 6	18000ml	2500gm	30.0x30.0x39.0



PRINTED MATKA WITH TAP, STAND & GLASS
Copper, Brass, Iron, Stainless Steel

Item Code	Size	Capacity	Weight	Dimension (cm)
T-725-C1-01	No. 1	3000ml	750gm	16.0x16.0x24.0
T-725-C2-01	No. 2	4700ml	1000gm	18.0x18.0x26.0
T-725-C3-01	No. 3	7500ml	1300gm	21.0x21.0x32.0
T-725-C4-01	No. 4	10800ml	1750gm	24.0x24.0x33.0
T-725-C5-01	No. 5	14000ml	2100gm	27.0x27.0x35.0
T-725-C6-01	No. 6	18000ml	2500gm	30.0x30.0x39.0



PRINTED MATKA WITH TAP
Copper, Brass, Stainless Steel

T-724-C2-01

Item Name	Size	Capacity	Weight	Dimension (cm)
MATKA X 1	No. 2	4700ml	1000gm	18.0x18.0x26.0
STAND X 1	---	---	310gm	6.5x6.5x5.5
TAPER GLASS - BOTTOM HAMMER X 1	---	250ml	75gm	8.0x8.0x10.0

TANKI WITH TAP
Copper, Brass



TANKI - STAND
Brass



TANKI WITH TAP

Item Name	Size	Capacity	Weight	Dimension (cm)
T-335A-H1	No. 1	1500ml	750gm	13.0x13.0x21.0
T-335A-H2	No. 2	2500ml	950gm	15.0x15.0x23.0
T-335A-H3	No. 3	6000ml	1400gm	19.0x19.0x31.0
T-335A-H4	No. 4	10000ml	1900gm	22.0x22.0x35.0
T-335A-H5	No. 5	13000ml	2250gm	25.0x25.0x34.0

TANKI - STAND

Item Name	Size	Weight	Dimension (cm)
T-335B-H1	No. 1	450gm	15.0x15.0x14.0
T-335B-H2	No. 2	520gm	17.0x17.0x14.0
T-335B-H3	No. 3	570gm	22.0x22.0x14.0
T-335B-H4	No. 4	620gm	26.0x26.0x14.0
T-335B-H5	No. 5	700gm	29.0x29.0x14.0

EXCLUSIVE SERIES



T-726-C1

Item Name	Capacity	Weight	Dimension (cm)
ROYAL ARABIAN KETTLE	700ml	720gm	7.5x7.5x18.0
ROYAL ARABIAN TRAY	---	470gm	36.0x26.0x2.0
ROYAL ARABIAN CUP	300ml	110gm	7.5x7.5x5.0
ROYAL ARABIAN PLATE	---	90gm	12.0x12.0x2.0



ROYAL ARABIAN ANTIQUE TEA SET
Brass, Stainless Steel



CONTAINER FLAT - SMALL
Copper, Brass



CONTAINER FLAT - BIG
Copper, Brass



CONTAINER JAR - SMALL
Copper, Brass



CONTAINER JAR - BIG
Copper, Brass

Item Name	Item Code	Size	Capacity	Weight	Dimension (cm)
CONTAINER FLAT - SMALL	T-200-H1	No. 1	450ml	300gm	10.0x10.0x12.0
CONTAINER FLAT - BIG	T-200-H2	No. 2	900ml	530gm	16.0x16.0x10.0
CONTAINER JAR - SMALL	T-199-H1	No. 1	400ml	270gm	6.5x6.5x8.0
CONTAINER JAR - BIG	T-199-H2	No. 2	800ml	400gm	8.0x8.0x6.0

BEDSIDE STORAGE



S. S. COPPER JUG - SILVER TOUCH
Copper, Stainless Steel

S.S. COPPER JUG - SILVER TOUCH

Item Code	No.	Capacity	Weight	Dimension (cm)
T-302-S1	No. 2	1100ml	550gm	10.0x10.0x20.0
T-302-S2	No. 4	1500ml	630gm	11.0x11.0x21.0
T-302-S3	No. 6	1800ml	710gm	12.0x12.0x22.0



S. S. COPPER JUG - HAMMER
Copper, Stainless Steel

S.S. COPPER JUG - HAMMER

Item Code	Size	Capacity	Weight	Dimension (cm)
T-321-H1	No. 2	1100ml	500gm	10.0x10.0x20.0
T-321-H2	No. 4	1500ml	600gm	11.0x11.0x21.0
T-321-H3	No. 6	1800ml	650gm	12.0x12.0x22.0

AQUA JUG - HAMMER

Item Code	Size	Capacity	Weight	Dimension (cm)
T-322-H1	No. 2	1100ml	380gm	10.0x10.0x21.0
T-322-H2	No. 4	1500ml	460gm	11.0x11.0x23.0
T-322-H3	No. 6	2200ml	550gm	12.0x12.0x25.0



AQUA JUG - HAMMER
Copper, Brass



AQUA JUG - SILVER TOUCH
Copper, Brass

AQUA JUG - SILVER TOUCH

Item Code	Size	Capacity	Weight	Dimension (cm)
T-320-S1	No. 2	1100ml	380gm	10.0x10.0x21.0
T-320-S2	No. 4	1500ml	460gm	11.0x11.0x23.0
T-320-S3	No. 6	2200ml	550gm	12.0x12.0x25.0

ECONOMY JUG - SILVER TOUCH

Item Code	Size	Capacity	Weight	Dimension (cm)
T-301A-S1	No. 2	1000ml	310gm	9.0x9.0x20.0
T-301A-S2	No. 4	1300ml	360gm	10.0x10.0x22.0
T-301A-S3	No. 6	1800ml	460gm	12.0x12.0x23.0



ECONOMY JUG - SILVER TOUCH
Copper



TURKISH JUG
Copper, Brass

Item Code	:	T-727-H1
Capacity	:	1000ml
Weight	:	520gm
Dimension	:	13.0x13.0x19.0

BEDSIDE STORAGE



TURKISH POT
Copper



GOGLET - BIG
Copper



GOGLET - SMALL
Copper

Item Name	No.	Item Code	Capacity	Weight	Dimension (cm)
TURKISH POT	T-728-H1	---	1000ml	430gm	13.0x13.0x19.0
GOGLET - SMALL	T-323-H1	No. 1	3000ml	750gm	11.0x11.0x23.0
GOGLET - BIG	T-323-H2	No. 2	700ml	410gm	10.0x10.0x18.0



BEDSIDE CARAFE
Copper



EVERY DAY CARAFE
Copper



GOGLET DAFFODIL
Copper, Brass

Item Name	Item Code	Capacity	Weight	Dimension (cm)
BEDSIDE CARAFE	T-729-H1	1000ml	350gm	8.0x8.0x20.0
EVERYDAY CARAFE	T-730-H1	1500ml	450gm	14.0x14.0x21.0
GOGLET DAFFODIL	T-731-H1	1000ml	370gm	2.0x2.0x10.0

BEDSIDE STORAGE



T-729-T1-01



T-729-T1-02



T-729-T1-03



T-729-T1-04



T-729-T1-05



T-729-T1-06



T-729-T1-07



T-729-T1-08



T-729-T1-09



T-729-T1-10

BEDSIDE CARAFE - TEXTURE LACQUER

Copper

Size : No. 1
Capacity : 1000ml
Weight : 350gm
Dimension (cm) : 8.0x8.0x20.0



T-730-T1-01



T-730-T1-02



T-730-T1-03



T-730-T1-04



T-730-T1-05



T-730-T1-06



T-730-T1-07



T-730-T1-10



T-730-T1-12



T-730-T1-13



T-730-T1-14

EVERYDAY CARAFE - TEXTURE LACQUER

Copper

Size : No. 1
Capacity : 1500ml
Weight : 450gm
Dimension (cm) : 14.0x14.0x21.0

TRAVEL PACK



MIST BOTTLE - SILVER TOUCH
Copper



MIST BOTTLE - HAMMER
Copper



MIST BOTTLE - DIAMOND
Copper



MIST BOTTLE - BOTTOM HAMMER
Copper



MIST BOTTLE - ETCHED LACQUER
Copper



MIST BOTTLE - MATT LACQUER
Copper



MIST BOTTLE - PLAIN
Copper

MIST BOTTLE

Item Name	Item Code	Size	Capacity	Weight	Dimension (cm)
MIST BOTTLE - PLAIN	T-315-P1	No. 1	700ml	230gm	7.0x7.0x23.0
MIST BOTTLE - PLAIN	T-315-P2	No. 2	900ml	260gm	7.0x7.0x26.0
MIST BOTTLE - PLAIN	T-315-P3	No. 3	1100ml	300gm	7.5x7.5x27.5
MIST BOTTLE - PLAIN	T-315-P4	No. 4	1300ml	350gm	8.0x8.0x28.0
MIST BOTTLE - ETCHED LACQUER	T-745-E1	No. 2	900ml	260gm	7.0x7.0x26.0
MIST BOTTLE - SILVER TOUCH	T-315-S2	No. 2	900ml	260gm	7.0x7.0x26.0
MIST BOTTLE - HAMMER	T-315-H2	No. 2	900ml	260gm	7.0x7.0x26.0
MIST BOTTLE - DIAMOND	T-326-D1	No. 2	900ml	260gm	7.0x7.0x26.0
MIST BOTTLE - BOTTOM HAMMER LACQUER	T-732-H1	No. 2	900ml	290gm	7.0x7.0x27.0
MIST BOTTLE - MATT LACQUER	T-315-M2	No. 2	900ml	260gm	7.0x7.0x26.0



T-315-C2-02



T-315-C2-03



T-315-C2-04



T-315-C2-01

MIST BOTTLE - COLORED LACQUER

Copper
Size : No. 2
Capacity : 900ml
Weight : 280gm
Dimension (cm) : 7.0x7.0x27.0



T-315-C2-05



T-315-T2-01



T-315-T2-02



T-315-T2-03



T-315-T2-04



T-315-T2-05



T-315-T2-06

MIST BOTTLE - TEXTURE LACQUER

Copper

Size : No. 2
 Capacity : 900ml
 Weight : 280gm
 Dimension (cm) : 7.0x7.0x27.0



UNIQUE BOTTLE - SMALL LACQUER

Copper

Item Code : T-324-M1
 No. : No.1
 Capacity : 500ml
 Weight : 230gm
 Dimension (cm) : 6.0x6.0x17.0



UNIQUE BOTTLE - BIG LACQUER

Copper

Item Code : T-324-M2
 No. : No.2
 Capacity : 900ml
 Weight : 280gm
 Dimension (cm) : 7.0x7.0x25.0



T-324-T2-01



T-324-T2-02



T-324-T2-03



T-324-T2-04

Size : No. 2
 Capacity : 900ml
 Weight : 280gm
 Dimension (cm) : 7.0x7.0x25.0

UNIQUE BOTTLE - TEXTURE LACQUER

Copper



**CHAMPAGNE BOTTLE
SMALL LACQUER**
Copper



**CHAMPAGNE BOTTLE
BIG LACQUER**
Copper

Item Name	Item Code	Size	Capacity	Weight	Dimension (cm)
CHAMPAGNE BOTTLE - SMALL	T-330-H1	No. 1	700ml	270gm	6.5x6.5x26.0
CHAMPAGNE BOTTLE - BIG	T-330-H2	No. 2	1300ml	400gm	8.5x8.5x32.0

Item Name	Item Code	Size	Capacity	Weight	Dimension (cm)
REGAL BOTTLE	T-314-P1	No. 1	700ml	220gm	5.0x5.0x24.0
ELEGANT BOTTLE - LACQUER	T-325-P1	No. 1	1100ml	290gm	6.5x6.5x28.0



REGAL BOTTLE
Copper



ELEGANT BOTTLE - LACQUER
Copper



**THERMOS BOTTLE
SMALL LACQUER**
Copper



**THERMOS BOTTLE
BIG LACQUER**
Copper

Item Name	Item Code	Size	Capacity	Weight	Dimension (cm)
THERMOS BOTTLE - SMALL LACQUER	T-327-H1	No. 1	1500ml	590gm	10.0x10.0x26.0
THERMOS BOTTLE - BIG LACQUER	T-327-H2	No. 2	2000ml	620gm	10.0x10.0x29.0



**RUBY BOTTLE
SMALL LACQUER**
Copper



**RUBY BOTTLE
BIG LACQUER**
Copper

Item Name	Item Code	Size	Capacity	Weight	Dimension (cm)
RUBY BOTTLE - SMALL LACQUER	T-314-P1	No. 1	700ml	200gm	5.0x5.0x24.0
RUBY BOTTLE - BIG LACQUER	T-325-P1	No. 1	1100ml	290gm	6.5x6.5x28.0

TRAVEL PACK



**SLEEK BOTTLE
SMALL LACQUER**
Copper

**SLEEK BOTTLE
BIG LACQUER**
Copper

**SLEEK BOTTLE
SLANTY LACQUER**
Copper

Item Name	Item Code	Size	Capacity	Weight	Dimension (cm)
SLEEK BOTTLE - SMALL LACQUER	T-733-P2	No. 1	450ml	150gm	6.0x6.0x18.5
SLEEK BOTTLE - BIG LACQUER	T-733-P1	No. 2	650ml	190gm	6.0x6.0x25.5
SLEEK BOTTLE - SLANTY LACQUER	T-733A-P1	No. 1	900ml	270gm	6.5x6.5x25.0

Item Name	Item Code	Size	Capacity	Weight	Dimension (cm)
BOTTLE WITH GLASS - MATT LACQUER	T-734-P1	No. 1	900ml	360gm	7.5x7.5x28.0
BOTTLE WITH GLASS - MID HAMMER LACQUER	T-734-H1	No. 1	900ml	360gm	7.5x7.5x28.0



ON-THE-GO BOTTLE
Copper, Stainless Steel

Item Code : T-735-P1
Capacity : 900ml
Weight : 500gm
Dimension (cm) : 7.5x7.5x27.0



**BOTTLE WITH GLASS
MID HAMMER LACQUER**
Copper

**BOTTLE WITH GLASS
MATT LACQUER**
Copper

Item Name	Item Code	Capacity	Weight	Dimension (cm)
VINTAGE BOTTLE - HAMMER LACQUER	T-736-H1	900ml	270gm	6.5x6.5x26.0
VINTAGE BOTTLE - MATT LACQUER	T-736-M1	900ml	270gm	6.5x6.5x26.0



**VINTAGE BOTTLE
HAMMER LACQUER**
Copper



**VINTAGE BOTTLE
MATT LACQUER**
Copper

TUMBLER



SS/Cu GLASS - SILVER TOUCH
Copper



SS/Cu GLASS - HAMMER
Copper, Stainless Steel



AMRAPALI GLASS - HAMMER
Copper



AMRAPALI GLASS - SILVER TOUCH
Copper



AMRAPALI GLASS
Copper

Item Name	Item Code	Capacity	Weight	Dimension (cm)
SS/Cu GLASS - SILVER TOUCH	T-307-S1	200ml	130gm	7.5x7.5x10.0
SS/Cu GLASS - HAMMER	T-307-H1	200ml	130gm	7.5x7.5x10.0
AMRAPALI GLASS	T-339-P1	250ml	85gm	7.5x7.5x10.0
AMRAPALI GLASS - HAMMER	T-339-H1	250ml	85gm	7.5x7.5x10.0
AMRAPALI GLASS - SILVER TOUCH	T-339-S1	250ml	85gm	7.5x7.5x10.0
AMRAPALI GLASS - ETCHED	T-339-E1	250ml	85gm	7.5x7.5x10.0



AMRAPALI GLASS - ETCHED
Copper



DIMPLE GLASS
Copper



DAMRU GLASS - MID HAMMER
Copper



DAMRU GLASS - HAMMER
Copper



DAMRU GLASS - BOTTOM HAMMER
Copper

Item Name	No.	Item Code	Capacity	Weight	Dimension (cm)
DIMPLE GLASS	No. 1	T-307-S1	200ml	85gm	7.5x7.5x10.0
DIMPLE GLASS	No. 2	T-307-H1	200ml	120gm	7.5x7.5x10.0

DAMRU GLASS

Item Finish	Item Code	Capacity	Weight	Dimension (cm)
MID HAMMER	T-737A-P1	250ml	85gm	7.5x7.5x10.0
HAMMER	T-737-H1	250ml	85gm	7.5x7.5x10.0
BOTTOM HAMMER	T-737B-H1	250ml	85gm	7.5x7.5x10.0



T-737-T1-01



T-737-T1-03



T-737-T1-04



T-737-T1-05

DAMRU GLASS - TEXTURE
Copper

Size : No. 1
Capacity : 250ml
Weight : 85gm
Dimension (cm) : 8.0x8.0x9.0

TUMBLER



VINTAGE GLASS - HAMMER
Copper



VINTAGE GLASS - PLAIN
Copper

Item Name	Item Code	Capacity	Weight	Dimension (cm)
VINTAGE GLASS - HAMMER	T-738-H1	300ml	90gm	8.5x8.5x10.0
VINTAGE GLASS - PLAIN	T-738-P1	300ml	90gm	8.5x8.5x10.0

Item Name	Item Code	Capacity	Weight	Dimension (cm)
TAPER GLASS - TOP HAMMER	T-739B-H1	250ml	75gm	8.0x8.0x10.0
TAPER GLASS - MID HAMMER	T-739C-H1	250ml	75gm	8.0x8.0x10.0
TAPER GLASS - BOTTOM HAMMER	T-739A-H1	250ml	75gm	8.0x8.0x10.0



TAPER GLASS - TOP HAMMER
Copper



TAPER GLASS - MID HAMMER
Copper



TAPER - BOTTOM HAMMER
Copper



TAPER GLASS - BEADED HAMMER
Copper

Item Name	Item Code	No.	Capacity	Weight	Dimension (cm)
TAPER GLASS - BEADED HAMMER	T-309-H2	No. 2	300ml	150gm	8.5x8.5x11.0
TAPER GLASS - BEADED HAMMER	T-309-H3	No. 3	500ml	120gm	9.5x9.5x13.0

Item Name	Item Code	No.	Capacity	Weight	Dimension (cm)
TAPER GLASS - BEADED	T-309-P1	No. 1	200ml	120gm	7.0x7.0x9.0
TAPER GLASS - BEADED	T-309-P2	No. 2	300ml	150gm	8.5x8.5x11.0
TAPER GLASS - BEADED	T-309-P3	No. 3	500ml	120gm	9.5x9.5x13.0



TAPER GLASS BEADED
Copper



JUICEE GLASS - PLAIN
Copper



JUICEE GLASS - HAMMER
Copper



SOVEREIGN GLASS
Copper



SS LINER GLASS
Copper, Stainless Steel

Item Name	Item Code	No.	Capacity	Weight	Dimension (cm)
JUICEE GLASS - PLAIN	T-309-P1	No. 1	200ml	85gm	7.0x7.0x9.0
JUICEE GLASS - HAMMER	T-309-P2	No. 2	300ml	120gm	8.5x8.5x11.0
SOVEREIGN GLASS	T-309-P3	No. 3	500ml	160gm	9.5x9.5x13.0
SS LINER GLASS	T-309-P3	No. 3	500ml	150gm	9.5x9.5x13.0



G-508-C1-00
VERACITY PRINTED - 5 PCS. SET
Copper



G-525-P0
MORNING DEW SET - 3 PCS. SET
Copper



G-519-D0
MORNING DEW DIAMOND - 3 Pcs. Set
Copper



G-524-H0
MONARCH SET - 6 PCS. SET
Copper



KING

INTERNATIONAL

TABLEWARE COLLECTION

Works : C-38 Wazirpur Industrial Area, New Delhi, India-110052

Tel. : +91-9811855336

Email : sales@king-international.in

Website : www.king-international.in