



**King
International**



**Half
Cylindrical Bin**

| Size |
|--------|
| 7x10" |
| 8x12" |
| 10x14" |
| 12x16" |

www.King-International.com



Balti with Cover
Set of 3pcs
Item Code



Digital Graphic Push Can Bins



NEW! Digital Graphic Push Can Bins

- Size
- 6"x10"
 - 8"x16"
 - 8"x28"
 - 8"x32"
 - 10"x18"
 - 10"x28"
 - 10"x32"
 - 12"x28"
 - 12"x32"
 - 14"x28"
 - 14"x32"

Note : Customized Colors & Graphics can be made. Subject to MOQ.



www.King-International.com

Digital Graphic Swing Bins



Digital Graphic
Swing Bins

NEW!

- Size
- 8"x12"
 - 8"x24"
 - 8"x28"
 - 10"x14"
 - 10"x24"
 - 10"x28"
 - 12"x16"
 - 12"x24"
 - 12"x28"
 - 14"x24"
 - 14"x28"
 - 16"x24"
 - 16"x28"



Note : Customized Colors & Graphics can be made. Subject to MOQ.

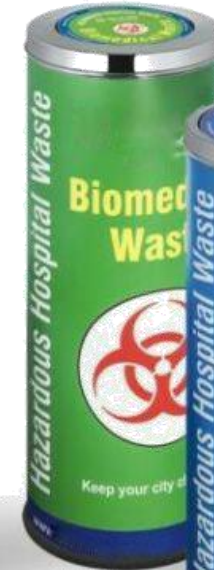
Digital Graphic Hospital Bins

Digital Graphic Hospital Bins

NEW!

Size

- 8"x12"
- 8"x24"
- 8"x28"
- 10"x14"
- 10"x24"
- 10"x28"
- 12"x16"
- 12"x24"
- 12"x28"
- 14"x24"
- 14"x28"
- 16"x24"
- 16"x28"



Note : Customized Colors & Graphics can be made. Subject to MOQ.

Outdoor Pole Hanging Bins



Note : Outdoor Pole Hanging Bins Customized as per as specification.



Color Peddle Bin

| Size |
|---------|
| 5 Ltr. |
| 7 Ltr. |
| 11 Ltr. |
| 20 Ltr. |

www.King-International.com

→ Push Can Bins

Push Can Bins

- Size
- 6"x10"
 - 8"x16"
 - 8"x28"
 - 8"x32"
 - 10"x18"
 - 10"x28"
 - 10"x32"
 - 12"x28"
 - 12"x32"
 - 14"x28"
 - 14"x32"



Push Can Bins



Ash 'n' Trash Bins



Ash 'n' Trash Bins

Ash 'n' Trash Bins

- Size
- 8"x24"
 - 8"x28"
 - 10"x24"
 - 10"x28"
 - 12"x24"
 - 12"x28"
 - 14"x24"
 - 14"x28"



Off White

Baby Pink

Red

Blue

Green

Brown

Black

Color Ash 'n' Trash Bins



www.King-International.com



**King
International**



Plain
Cylindrical Bin

Size

7x10"

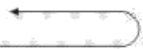
8x12"

10x14"

12x16"

www.King-International.com

Outdoor Pole Hanging Bins



Air Port Bin

- All the products are available in various sizes with different designs.
- All the products have providing rubber been made antiskid by providing rubber in the Base.
- All the products are available in satin as well as in glossy finish.
- All dimensions are in inch and are approximate.
- Planters and Bins can be specially manufactured as per your drawings and specifications
- Special sizes in all Bins can be made only in coils sizes are 8 x 36, 10 x 36, 12 x 36
- Due to continuous product upgradations, specifications and designs may change without prior notice.

Note : Outdoor Pole Hanging Bins Customized as per as specification.

Digital Graphic Swing Bins

Digital Graphic
Swing Bins

NEW!

Size

- 8"x12"
- 8"x24"
- 8"x28"
- 10"x14"
- 10"x24"
- 10"x28"
- 12"x16"
- 12"x24"
- 12"x28"
- 14"x24"
- 14"x28"
- 16"x24"
- 16"x28"





**King
International**



Plain Peddle Bin

Size

5 Ltr.

7 Ltr.

11 Ltr.

20 Ltr.



**King
International**



Cutlery Holder

Size

4X4"

4X5"

4X6"

4X7"

→ Cylindrical Bins



Leather Finish



Hammer Finish



Copper Finish



Antique Silver

Antique Copper

Cylindrical Bins

Size

- 7"x10"
- 8"x12"
- 10"x14"
- 12"x16"

Pedal Bins



Leather Finish



Copper Finish



Antique Copper



Antique Silver

Pedal Bins

| Item Code | Size |
|-----------|----------|
| * - 001 | 5 Ltrs. |
| * - 002 | 7 Ltrs. |
| * - 003 | 11 Ltrs. |
| * - 004 | 20 Ltrs. |



Off White



Baby Pink



Red



Blue



Green



Brown



Black

Color Pedal Bins

Pedal Bins



| Pedal Bins | |
|------------|----------|
| Item Code | Size |
| * - 001 | 5 Ltrs. |
| * - 002 | 7 Ltrs. |
| * - 003 | 11 Ltrs. |
| * - 004 | 20 Ltrs. |

Square Perforated Pedal Bins



Off White Baby Pink Red Brown Blue Green Black

Color Square Perforated Pedal Bins



Swing Bins

Swing Bins

| Item Code | Size |
|-----------|---------|
| * - 001 | 8"x12" |
| * - 002 | 8"x24" |
| * - 003 | 8"x28" |
| * - 004 | 10"x14" |
| * - 005 | 10"x24" |
| * - 006 | 10"x28" |
| * - 007 | 12"x16" |
| * - 008 | 12"x24" |
| * - 009 | 12"x28" |
| * - 010 | 14"x24" |
| * - 011 | 14"x28" |
| * - 012 | 16"x24" |
| * - 013 | 16"x28" |

Swing Bins



Off White



Baby Pink



Red



Blue



Green



Brown



Black

Color Swing Bins

